



WOOD CHIPPERS



WWW.ARPAL.UA

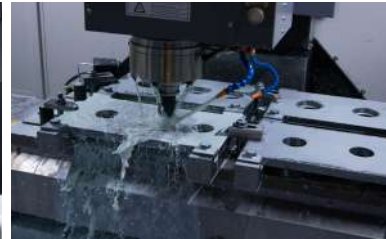
ABOUT US



For more than six years, Arpal company has been specializing in production of the equipment for recycling of wood residues into fuel for pyrolysis and solid fuel boilers, fireplaces, stoves and other heating devices, as well as for utilization and further processing of wood. During this time, our company confidently took the lead in the domestic market of Ukraine and actively wins markets of the European countries.

Arpal wood chippers have all the necessary quality and conformity certificates including CE certificate, enabling us to export our products to the countries of the European Union. Construction and industrial designs of wood chippers are protected by patents.

The work on the production of wood chippers is carried out on high quality equipment by the best specialists of their field. A significant part of the technological operations at the enterprise is automated allowing us to guarantee the stable high quality of the details of the chippers. The assembly of the wood chippers takes place under strict control and attention to all the details. We are confident in our production therefore we give a guarantee for 3 years on Arpal wood chippers





CHIPPERS with PTO

page

1. Wood chipper AM-160TR-K.....4
 2. Wood chipper AM-120TR-K PRO.....4
 3. Wood chipper AM-120TR-K.....5
 4. Wood chipper AM-160TR.....5
 5. Wood chipper AM-120TR MAX.....6
 6. Wood chipper AM-120TR.....6
 7. Wood chipper AM-80TR.....7



CHIPPERS with ICE

8. Wood chipper AM-120BD-K PRO.....8
 9. Wood chipper AM-120BD-K.....8
 10. Wood chipper AM-160BD.....9
 11. Wood chipper AM-120D MAX.....9
 12. Wood chipper AM-120D.....10
 13. Wood chipper AM-120BD MAX.....10
 14. Wood chipper AM-120BD.....11
 15. Wood chipper AM-80BD-M.....11
 16. Wood chipper AM-80BD.....12
 17. Wood chipper AM-60BD.....12



CHIPPERS with electric drive

18. Wood chipper AM-120SH.....13
 19. Wood chipper AM-120E.....13
 20. Wood chipper AM-80E.....14
 21. Wood chipper AM-60E.....14



SHREDDERS



22. Shredders MK-120TR.....15
 23. Shredders MK-100BD.....15
 24. Shredders MK-100E.....16
 25. Shredders MB-100BD.....16
 26. Shredders MB-60BD.....17



AM-160TR-K



tractor PTO



160 mm



12 m³/h



LOADING BELT

Using of the loading belt significantly increases productivity and reduce the number of workers involved in the work



SAFETY HANDLE

Input chipper hopper equipped with protection mechanism that allows you to turn off the chipper at any time



LIFTING MECHANISM

For easy and quick adjustment of the loading belt to the working position

DRIVEGEAR: tractor PTO

MAX. TREE DIAMETER: 16 cm

OUTCOMING PIECE: 12...24 cm

MAX. PERFORMANCE: 12 m³/h

DIMENSIONS: 157 x 118 x 204 cm

WEIGHT: 650 kg



AM-120TR-K PRO



tractor PTO



120 mm



10 m³/h

DRIVEGEAR: tractor PTO

MAX. TREE DIAMETER: 12 cm

OUTCOMING PIECE: 9...18 cm

MAX. PERFORMANCE: 10 m³/h

DIMENSIONS: 186 x 86 x 182cm

WEIGHT: 320 kg



DRIVEGEAR:	tractor PTO
MAX. TREE DIAMETER:	12 cm
OUTCOMING PIECE:	9...18 cm
MAX. PERFORMANCE:	10 m ³ /h
DIMENSIONS:	170 x 84 x 229 cm
WEIGHT:	295 kg



AM-120TR-K



HEAT TREATMENT

All working elements of the chippers are heat treated with high frequency currents, which significantly increases the operational life of the parts



BLADES CONVERGING

The distance between the blades is less than 0.2 mm



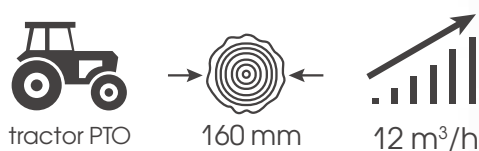
MODERN HIGH PRECISION CNC MACHINES

Provide the most accurate machining of parts and consistently high quality

DRIVEGEAR:	tractor PTO
MAX. TREE DIAMETER:	16 cm
OUTCOMING PIECE:	12...24 cm
MAX. PERFORMANCE:	12 m ³ /h
DIMENSIONS:	210 x 127 x 124 cm
WEIGHT:	450 kg



AM-160TR



AM-120TR MAX



DRIVEGEAR:	tractor PTO
MAX. TREE DIAMETER:	12 cm
OUTCOMING PIECE:	9...18 cm
MAX. PERFORMANCE:	6 m³/h
DIMENSIONS:	173 x 89 x 120 cm
WEIGHT:	220 kg



WORKING SHAFTS

The special design of the working shafts greatly increases the torque, which is transmitted from the drive to the chipper blades



THE HOPPER FOR TWO GRIDS

the hopper for two grids allows to pack production continuously in two grids at once. This option significantly improves the performance of the chipper



SAFETY CLUTCH

This clutch allows the engine to start smoothly and prevents sudden stops at critical loads (while getting too thick branches)

AM-120TR

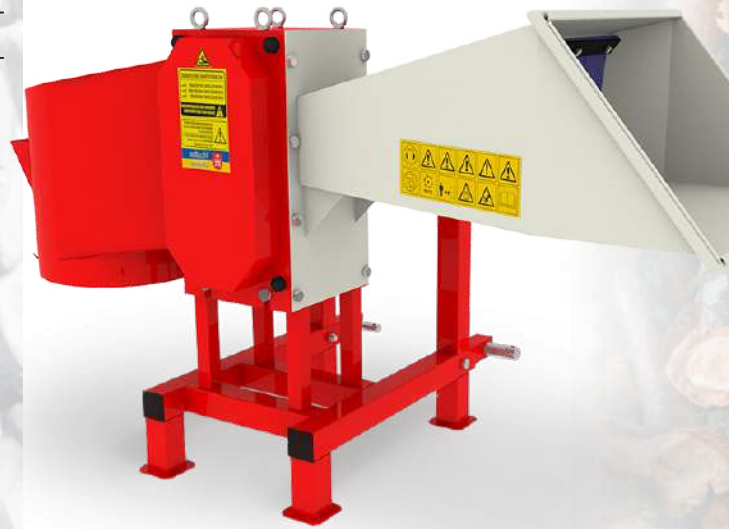


DRIVEGEAR:	tractor PTO
MAX. TREE DIAMETER:	12 cm
OUTCOMING PIECE:	9...18 cm
MAX. PERFORMANCE:	6 m³/h
DIMENSIONS:	152 x 89 x 120 cm
WEIGHT:	205 kg



DRIVEGEAR:	tractor PTO
MAX. TREE DIAMETER:	8 cm
OUTCOMING PIECE:	6...12 cm
MAX. PERFORMANCE:	4 m ³ /h
DIMENSIONS:	148 x 78 x 82 cm
WEIGHT:	115 kg

AM-80TR



LANDING GEARS ON CONE CLUTCHES
For the most accurate blades match, durable operation and additional protection



MAXIMUM DIAMETER 160 MM
Chippers of our production are able to process wood waste up to 16 cm



POWDER COATING
All chippers of our production are covered with high-quality powder paint, which reliably protects the body of the chipper from corrosion and mechanical impact of branches



AM-120BD-K PRO



120 mm

10 m³/h



LOADING BELT

Using of the loading belt significantly increases productivity and reduce the number of workers involved in the work



SAFETY HANDLE

Input chipper hopper equipped with protection mechanism that allows you to turn off the chipper at any time



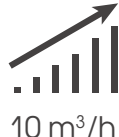
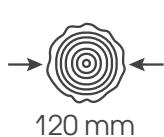
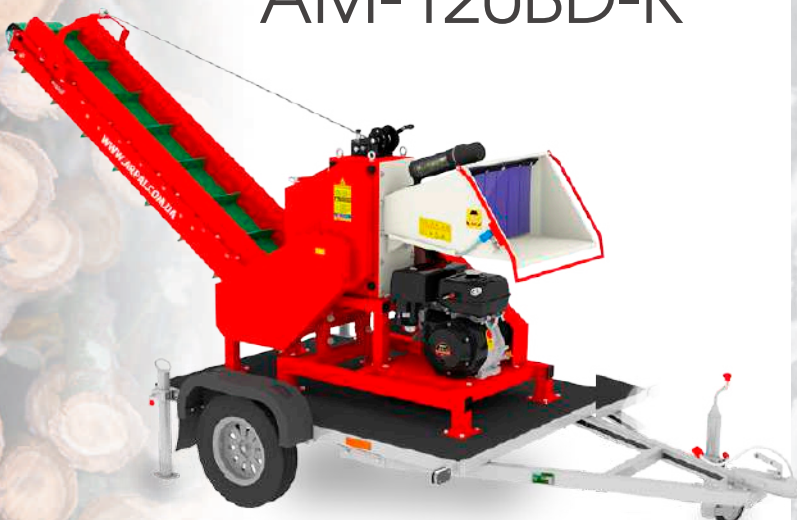
LIFTING MECHANISM

For easy and quick adjustment of the loading belt to the working position

DRIVEGEAR:	gasoline engine / 18 H.P. / 800 g/h / 3600 rpm
MAX. TREE DIAMETER:	12 cm
OUTCOMING PIECE:	9...18 cm
MAX. PERFORMANCE:	10 m ³ /h
DIMENSIONS:	321 x 180 x 242 cm
WEIGHT:	400 kg



AM-120BD-K



120 mm

10 m³/h

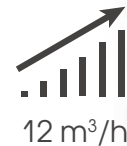
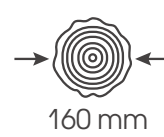
DRIVEGEAR:	gasoline engine / 18 H.P. / 800 g/h / 3600 rpm
MAX. TREE DIAMETER:	12 cm
OUTCOMING PIECE:	9...18 cm
MAX. PERFORMANCE:	10 m ³ /h
DIMENSIONS:	310 x 177 x 295 cm
WEIGHT:	400 kg



DRIVEGEAR:	gasoline engine / 20 H.P. / 1500 g/h / 3600 rpm
MAX. TREE DIAMETER:	16 cm
OUTCOMING PIECE:	12...24 cm
MAX. PERFORMANCE:	12 m ³ /h
DIMENSIONS:	185x110x130 cm
WEIGHT:	615 kg



AM-160BD



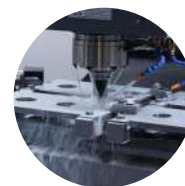
HEAT TREATMENT

All working elements of the chippers are heat treated with high frequency currents, which significantly increases the operational life of the parts



BLADES CONVERGING

The distance between the blades is less than 0.2 mm



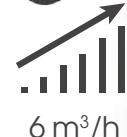
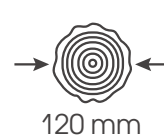
MODERN HIGH PRECISION CNC MACHINES

Provide the most accurate machining of parts and consistently high quality

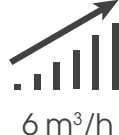
DRIVEGEAR:	diesel engine / 14 H.P. / 3600 rpm
MAX. TREE DIAMETER:	12 cm
OUTCOMING PIECE:	9...18 cm
MAX. PERFORMANCE:	6 m ³ /h
DIMENSIONS:	173 x 108 x 145 cm
WEIGHT:	340 kg



AM-120D MAX



AM-120D



WORKING SHAFTS

The special design of the working shafts greatly increases the torque, which is transmitted from the drive to the chipper blades



THE HOPPER FOR TWO GRIDS

the hopper for two grids allows to pack production continuously in two grids at once. This option significantly improves the performance of the chipper



SAFETY CLUTCH

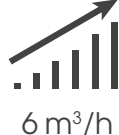
This clutch allows the engine to start smoothly and prevents sudden stops at critical loads (while getting too thick branches)



DRIVEGEAR:	diesel engine / 14 H.P. / 3600 rpm
MAX. TREE DIAMETER:	12 cm
OUTCOMING PIECE:	9...18 cm
MAX. PERFORMANCE:	6 m³/h
DIMENSIONS:	152 x 78 x 120 cm
WEIGHT:	305 kg



AM-120BD MAX



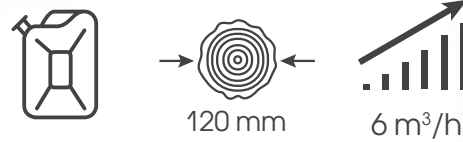
DRIVEGEAR:	gasoline engine / 16 H.P. / 800 g/h / 3600 rpm
MAX. TREE DIAMETER:	12 cm
OUTCOMING PIECE:	9...18 cm
MAX. PERFORMANCE:	6 m³/h
DIMENSIONS:	173 x 108 x 145 cm
WEIGHT:	315 kg



DRIVEGEAR:	gasoline engine / 16 H.P. / 800 g/h / 3600 rpm
MAX. TREE DIAMETER:	12 cm
OUTCOMING PIECE:	9...18 cm
MAX. PERFORMANCE:	6 m ³ /h
DIMENSIONS:	152 x 78 x 120 cm
WEIGHT:	280 kg



AM-120BD



LANDING GEARS ON CONE CLUTCHES

For the most accurate blades match, durable operation and additional protection



MAXIMUM DIAMETER 160 MM

Chippers of our production are able to process wood waste up to 16 cm



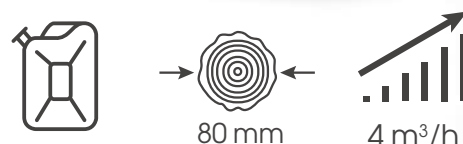
POWDER COATING

All chippers of our production are covered with high-quality powder paint, which reliably protects the body of the chipper from corrosion and mechanical impact of branches

DRIVEGEAR:	gasoline engine / 7 H.P. / 400 g/h / 3600 rpm
MAX. TREE DIAMETER:	8 cm
OUTCOMING PIECE:	6...12 cm
MAX. PERFORMANCE:	4 m ³ /h
DIMENSIONS:	169 x 75 x 140 cm
WEIGHT:	267 kg



AM-80BD-M



AM-80BD



LOADING BELT

Using of the loading belt significantly increases productivity and reduce the number of workers involved in the work



SAFETY HANDLE

Input chipper hopper equipped with protection mechanism that allows you to turn off the chipper at any time



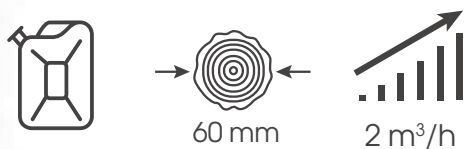
LIFTING MECHANISM

For easy and quick adjustment of the loading belt to the working position

DRIVEGEAR:	gasoline engine / 7 H.P. / 400 g/h / 3600 rpm
MAX. TREE DIAMETER:	8 cm
OUTCOMING PIECE:	6...12 cm
MAX. PERFORMANCE:	4 m ³ /h
DIMENSIONS:	149 x 75 x 123 cm
WEIGHT:	145 kg



AM-60BD



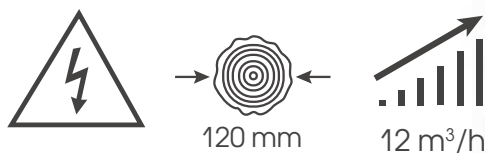
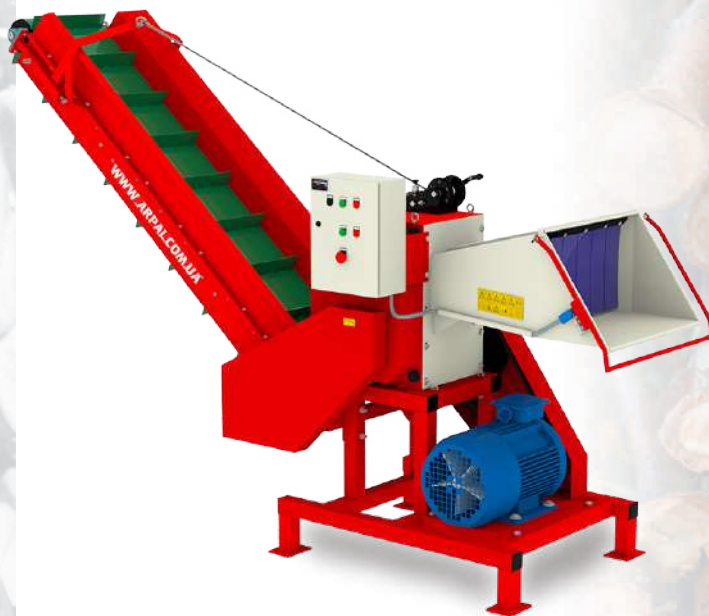
DRIVEGEAR:	gasoline engine / 7 H.P. / 400 g/h / 3600 rpm
MAX. TREE DIAMETER:	6 cm
OUTCOMING PIECE:	5...8 cm
MAX. PERFORMANCE:	2 m ³ /h
DIMENSIONS:	107 x 63 x 93 cm
WEIGHT:	115 kg



DRIVEGEAR:	electromotor / 380 V / 18 kW / 3000 rpm
MAX. TREE DIAMETER:	12 cm
OUTCOMING PIECE:	9...18 cm
MAX. PERFORMANCE:	12 m ³ /h
DIMENSIONS:	157 x 89 x 276 cm
WEIGHT:	600 kg



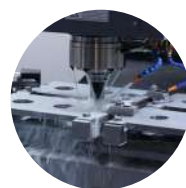
AM-120SH



HEAT TREATMENT
All working elements of the chippers are heat treated with high frequency currents, which significantly increases the operational life of the parts



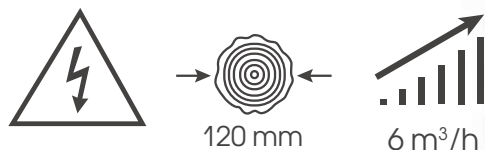
BLADES CONVERGING
The distance between the blades is less than 0.2 mm



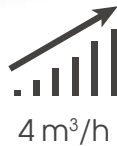
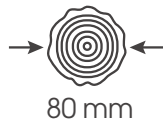
MODERN HIGH PRECISION CNC MACHINES
Provide the most accurate machining of parts and consistently high quality

DRIVEGEAR:	electromotor / 380 V / 11 kW / 3000 rpm
MAX. TREE DIAMETER:	12 cm
OUTCOMING PIECE:	9...18 cm
MAX. PERFORMANCE:	6 m ³ /h
DIMENSIONS:	175 x 98 x 132 cm
WEIGHT:	295 kg

AM-120E



AM-80E



LOADING BELT

Using of the loading belt significantly increases productivity and reduce the number of workers involved in the work



SAFETY HANDLE

Input chipper hopper equipped with protection mechanism that allows you to turn off the chipper at any time



SAFETY CLUTCH

This clutch allows the engine to start smoothly and prevents sudden stops at critical loads (while getting too thick branches)

DRIVEGEAR:	electromotor / 380 V / 4 kW / 3000 rpm
MAX. TREE DIAMETER:	8 cm
OUTCOMING PIECE:	6...12 cm
MAX. PERFORMANCE:	4 m³/h
DIMENSIONS:	148 x 82 x 123 cm
WEIGHT:	170 kg



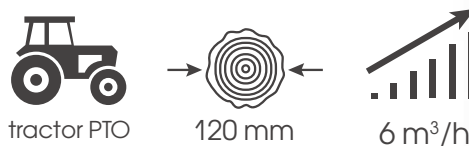
AM-60E



DRIVEGEAR:	electromotor / 380 V / 4 kW / 3000 rpm
MAX. TREE DIAMETER:	6 cm
OUTCOMING PIECE:	5...8 cm
MAX. PERFORMANCE:	2 m³/h
DIMENSIONS:	107 x 63 x 93 cm
WEIGHT:	115 kg



DRIVEGEAR:	tractor PTO
MAX. TREE DIAMETER:	12 cm
OUTCOMING PIECE:	0,5...5 cm
MAX. PERFORMANCE:	6 m ³ /h
DIMENSIONS:	128 x 129 x 165 cm
WEIGHT:	180 kg



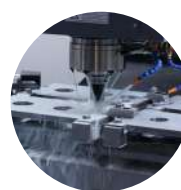
HEAT TREATMENT

All working elements of the chippers are heat treated with high frequency currents, which significantly increases the operational life of the parts



ROTARY BELL

The bell rotates 360 degrees



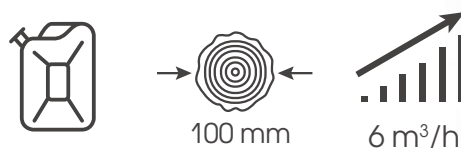
MODERN HIGH PRECISION CNC MACHINES

Provide the most accurate machining of parts and consistently high quality

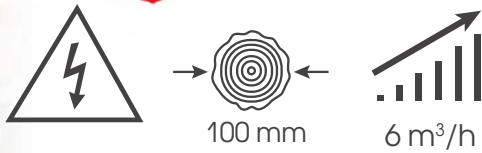
DRIVEGEAR:	gasoline engine / 18 H.P. / 800 g/h / 3600 rpm
MAX. TREE DIAMETER:	8 cm
OUTCOMING PIECE:	0,5...5 cm
MAX. PERFORMANCE:	6 m ³ /h
DIMENSIONS:	172 x 129 x 165 cm
WEIGHT:	240 kg



MK-100BD



MK-100E



MAX. LOADING HEIGHT 3 M
For easy loading into the truck



SAFETY HANDLE
Input chipper hopper equipped with protection mechanism that allows you to turn off the chipper at any time

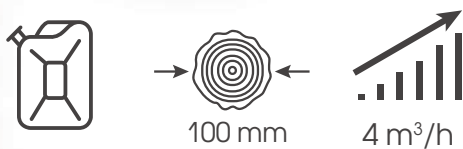


PROTECTIVE SHUTTER
To protect the operator from flying pieces of wood

DRIVEGEAR:	electromotor / 380 V / 11 kW / 3000 rpm
MAX. TREE DIAMETER:	10 cm
OUTCOMING PIECE:	0,5...5 cm
MAX. PERFORMANCE:	6 m ³ /h
DIMENSIONS:	170 x 129 x 165 cm
WEIGHT:	295 kg



MB-100BD



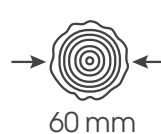
DRIVEGEAR:	gasoline engine / 18 H.P. / 800 g/h / 3600 rpm
MAX. TREE DIAMETER:	10 cm
OUTCOMING PIECE:	0,5...5 cm
MAX. PERFORMANCE:	4 m ³ /h
DIMENSIONS:	145 x 70 x 160 cm
WEIGHT:	230 kg



DRIVEGEAR:	gasoline engine / 7 H.P. / 400 g/h / 3600 rpm
MAX. TREE DIAMETER:	6 cm
OUTCOMING PIECE:	0,5...5 cm
MAX. PERFORMANCE:	2 m ³ /h
DIMENSIONS:	136 x 51 x 84 cm
WEIGHT:	96 kg



MB-60BD



STORAGE TUBE

For quick access to manuals and documents



MAXIMUM DIAMETER 120 MM

Chippers of our production are able to process wood waste up to 12 cm



POWDER COATING

All chippers of our production are covered with high-quality powder paint, which reliably protects the body of the chipper from corrosion and mechanical impact of branches



ARPAL CLIENTS



www.arpal.ua



[www.facebook.com/
arpal.vin](https://www.facebook.com/arpal.vin)



[www.youtube.com/
arpal_vin](https://www.youtube.com/arpal_vin)



Ukraine, Vinnytsya city,
Nemyrivske shosse str., 76



+38(044)499-02-54
+38(067)433-25-10



info@arpal.ua



**We are looking for dealers!
Join Arpal right now!**

