



El Toro Roofing Products Ltd



## Group



The St. Anthony's Group, now rebranded as the SA Group, was founded by the late Deshamanya A.Y.S. Gnanam - a visionary who built a flourishing enterprise on the back of hard work and perseverance. He envisaged reaching out to

communities by creating employment, a feat he accomplished by establishing manufacturing facilities in several sectors. This in turn would contribute to national development and the upliftment of industries and communities. Today, the SA Group continues to grow with the foundation he laid and is still recognized as one of the biggest conglomerates in Sri Lanka.

The group had its beginnings in the construction sector where it made great strides by importing much needed constructions materials. Today, it has six companies within this sector with some of them even having their own additional subsidiaries.

One of Sri Lanka's largest foreign exchange contributors is the IT BPO/KPO sector, which has shown significant growth in the last few years.

This is as a result of the potential generated by a variety of factors and the group was quick to spot it. Seeing the abundance of human capital and raw talent available, it ventured into software engineering, business consultations, BPO services and IT services. On the KPO side of things, it began working in finance and accounting, legal processes, medical research, third-party verification, web chat and social media optimization.

This is indicative of the stage the group has arrived at, where the groundwork laid by its founder has allowed it to explore new and exciting avenues. It is in the process of leveraging its considerable wealth in real estate and other resources to optimize this foray.

Sri Lanka's development agenda requires a well thought out plan to ensure that we meet our objectives and the SA Group is extremely supportive of establishing a strong private-public partnership. Such a partnership would allow the country to move forward and make further improvements within important sectors such as energy, which is a major catalyst for development.

As it is involved in numerous energy-intensive sectors, the group is also extremely conscious of its environmental responsibility. It has implemented several energy conservation initiatives and has therefore managed to considerably reduce its carbon footprint. It continues to try newer, greener ideas in a newer, greener economy.

# SA Group



## Group Vision

To be an inspiring corporate icon whose vision and leadership is emulated as a role model for developing industry and nation.

## Group Mission

To ensure that we build a Group which retains our founder's principles by inspiring an entrepreneurial culture, sustains good business ethics, creates opportunities for people, remains cognizant of environmental preservation and build strong relationships among the stakeholders, while upholding the simple premise of responsible corporate citizenship.

## Values

Hone a team that flourished in an environment of challenge and opportunity, while being individual entrepreneurs working towards collective business growth.

Continue to uphold the tenets of corporate accountability, ethics, principles and moral.

Build stakeholder relationships that are long lasting, sustainable and ascertain the path to sustained business growth.

# Our Story



The first company in Sri Lanka to manufacture environmentally friendly ceiling products and related accessories using state-of-the-art advanced technology from Germany, EL TORO Roofing Products Limited is a pioneer in the Construction Industry.

The company incorporated in 2013, is proud to be a part of the esteemed heritage of the St. Anthony's Group, one of the largest conglomerates in Sri Lanka. Spearheaded by the Managing Director, E.J. Gnanam, the company that began its operations in August 2017, is approved by the Board of Investment of Sri Lanka.

The unique approach adopted by EL TORO towards the Construction Industry sees the company focus on quality, technology, superior after-sales service and availability of its products at all times.

EL TORO enjoys unparalleled success and rides on the impeccable reputation built by the Founder and late Chairman of the St. Anthony's Group, A.Y.S. Gnanam who was a visionary that continues to inspire greater benchmarks for the company.

Innovation is important to maintain our pre-eminent position in the fiber-cement industry. Consequently, we invest heavily in research and development, with a special emphasis on product quality and production efficiency to develop durable building solutions.

# El Toro



## Company Vision

To become a benchmark of the industry

## Company Mission

Produce quality products using the latest technology and make it available for our customers with an excellent service while protecting our nature and the community.



[www.eltoro.lk](http://www.eltoro.lk)

## OUR STORY

We are the first company in Sri Lanka to manufacture ceiling and partition products and related accessories using 100% environment-friendly raw materials. Our business is proud to be powered by state-of-the-art high-end technology and machines from Germany. El Toro Roofing Products Ltd is backed by St. Anthony's Group, one of the largest conglomerates in Sri Lanka.



Silica Sand



Cellulose



Water



Cement

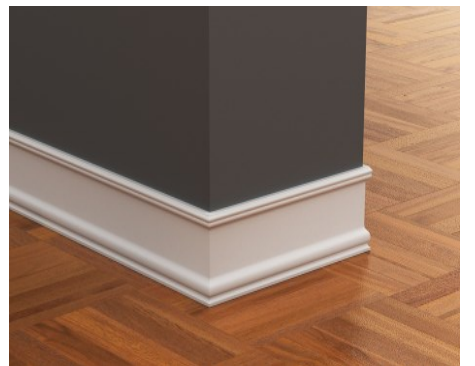
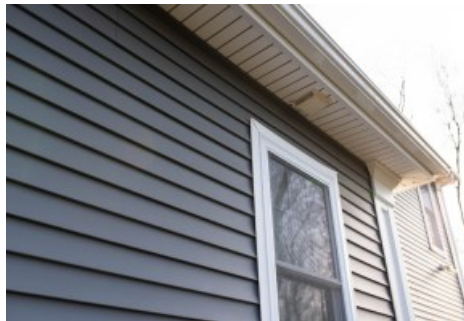
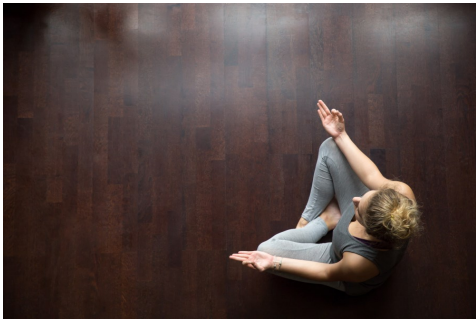
El Toro sheets' unique designs allow you to construct your home or office space with specialized separation panels and ceiling panels.

Create your next home or office space with the best and latest in panels, which are not only design worthy but also durable and environment-friendly.

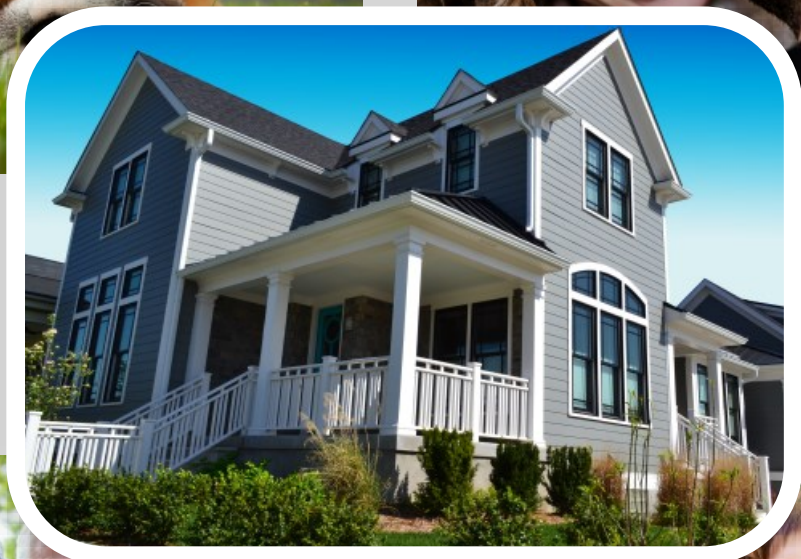
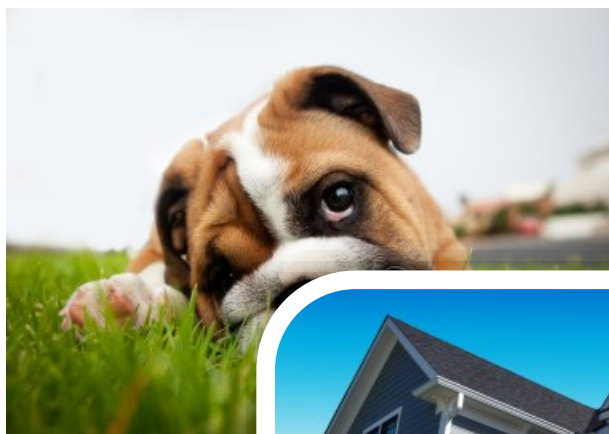


## OUR PRODUCTS

El Toro sheets is a fiber cement product composed of Portland Cement, Cellulose Fiber, Silica Sand and Water. The product's special manufacturing process ensures strength, durability, easy workability, and dimensional stability. El Toro has always emphasized the quality, technology, service and availability of its products while protecting nature and the community.



# One Company, have One Destiny



# Toro Ceiling



# Conventional / Plaster / Concealed Ceiling

El Toro Fiber Cement Ceiling Boards are made using autoclave technology and can stand extreme conditions such as high-pressure wind loads and moisture areas. El Toro Fiber Cement Board have thermal resistance and dimensional stability even under prolonged exposure to moisture. It can even be used in driveways, corridors, washrooms, factories, residences, sports complexes, libraries, wet areas, and many interior locations.



This is the most commonly used ceiling type with a standard style and is typically 9 to 10 feet high to soffit with standard construction material. It has a simple flat surface of accessible height. However, the height may vary according to customer requirements and structural design.

This system is a non-load bearing system, which includes El Toro Fiber Cement Boards fixed to the GI framing system. This is mostly used to provide a suspended false ceiling with a seamless/concealed finish. It is very easy and fast to erect and can easily accommodate all types of light systems and air-condition fittings.

Item Code	Size (mm)	Thickness (mm)	Average Mass (kg) per piece
FGE00007	1220x2440	6	25.86
FGE00013	1220x2440	7	29.85
FGE00012	1220x2440	8	34.11

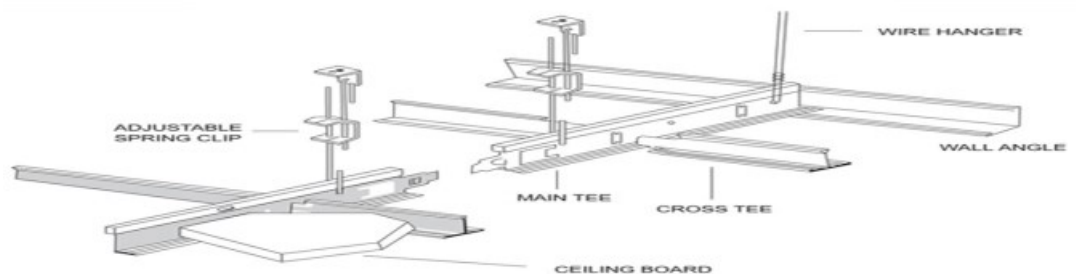
# Toro Suspended Ceiling





A suspended ceiling, otherwise known as the “drop ceiling” is a little different from the conventional ceiling. The suspended ceiling is a flat ceiling built below the roof on soffit slabs or existing ceilings. This exposed grid system has become more popular because of its flexibility and fast installation. This system, which is economical too, consists of a pre-coated wall angle, main and cross “T” with 24 mm-wide base, comprising pre-coated steel, and vertical flange. The integrity of the entire ceiling depends on the hangers or wires which are used to support the suspension system. The main T bar is connected by the cross T. The ends of the main and cross T rest on the wall angle which runs around the perimeter of the area.

Code	Size (mm)	Thickness (mm)	Weight Mass (Kg)
FGE00009	598 x 598	4.5	2.17
FGE00002	603 x 603	3.5	1.79
FGE00003	603 x 1213	3.5	3.59

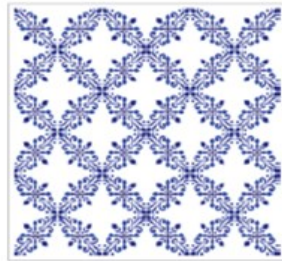


# Toro Design Ceiling

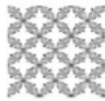
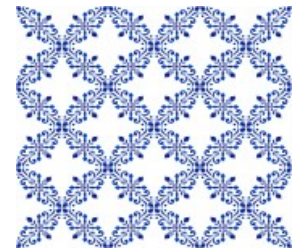
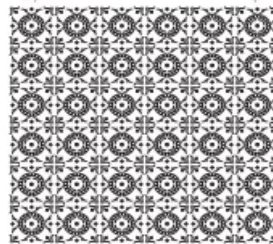


El Toro Design suspended ceiling is one of the most popular products in the domestic local market. The suspended ceiling is a flat ceiling built below the roof on soffit slabs or existing ceilings. This exposed grid system has become more popular because of its flexibility and fast installation. This economical system consists of a pre-coated wall angle, main and cross "T" with 24 mm-wide base, comprising pre-coated steel, and vertical flange. The integrity of the entire ceiling depends on the hangers or wires which are used to support the suspension system. The main T bar is connected by the cross T. The ends of the main and cross T rest on the wall angle which runs around the perimeter of the area.

## Available Colors



Product Code: CAB02BLU



CAB02BLK



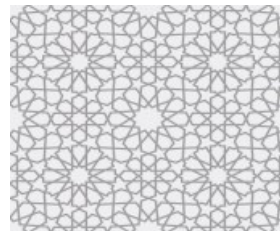
CAB02RED



CAB02ASH



CAB02GRN



# Toro Floor Board





### REDUCE POTENTIAL COSTS

The solution is fully demountable so that it can be relocated at a later date with minimal cost. The erection will be fast-tracked, causing minimum disruption. The major benefit is that it allows for more usage of the space you rent or own. Therefore, you will be paying the same amount for increased space.

### FOR RETAIL

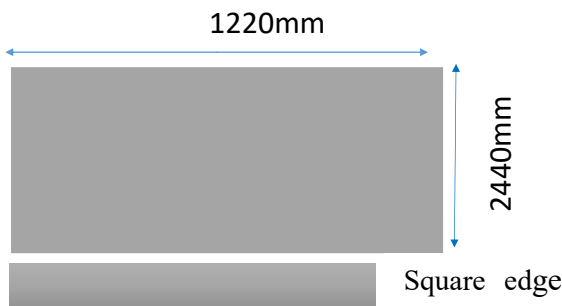
Using EL Toro Floor Boards for a mezzanine floor can increase your retail space. Further, it will add value to your property and increase your display space. This solution may enable you to offer more products and create a better shopping experience for your customers.

### FOR STORAGE AND PRODUCTION

When the existing place is no longer big enough to accommodate the current requirement, a mezzanine floor with EL Toro Floorboard is the most common solution. EL Toro boards save substantial cost and time in comparison with traditional concrete floor solutions. Further, it saves the inconvenience of moving to a new property, while doubling your production and storage space in a short timeframe with minimal disruption.

### FOR OFFICE

EL Toro Floorboards are the perfect way to create space for new offices, whether in an existing office unit, above a manufacturing space or any other type of business premises. Further, it is significantly cheaper than a block, cement, and beam solution as well as being faster and less cumbersome to install.



Code	Size (mm)	Thickness (mm)	Weight Mass (Kg)
FGE00020	1220x2440	15	65.33
FGE00021	1220x2440	16	69.68
FGE00022	1220x2440	17	74.03
PGE00023	1220x2440	18	78.39

# Wall Board





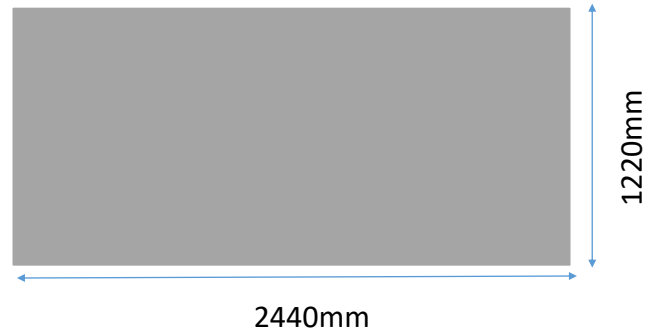
EL Toro Fiber Cement Boards are made using autoclave technology and can stand extreme conditions such as high-pressure wind loads and moisture areas. Toro Fiber Cement Board sheets have thermal resistance and dimensional stability even under prolonged exposure to moisture. They can even be used in driveways, corridors, washrooms, factories, residences, sports complexes, libraries, wet areas, and many interior locations.



Tapered edge



Square edge



Code	Size (mm)	Thickness (mm)	Weight Mass (Kg)
FGE00007	1220x2440	6	25.86
FGE00013	1220x2440	7	29.85
FGE00012	1220x2440	8	34.11
FGE00014	1220x2440	9	38.71
FGE00015	1220x2440	10	43.55
FGE00016	1220x2440	11	47.90
FGE00017	1220x2440	12	52.26



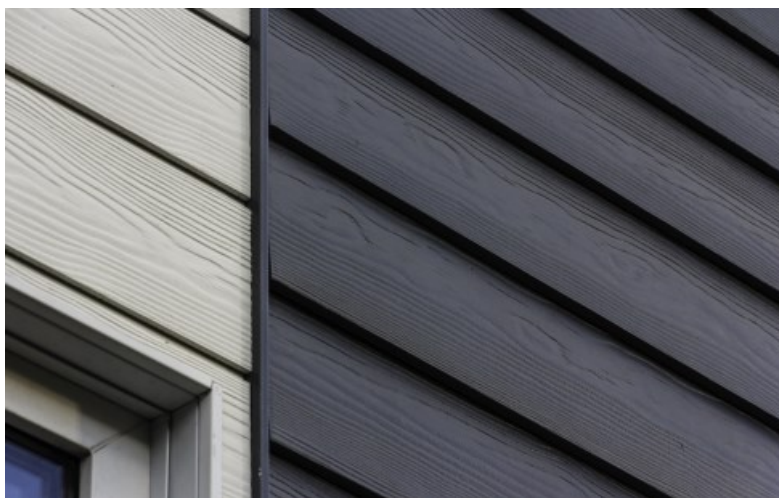
# Wood Substitutes



# Sidings / Lap Sidings

ToroSidings™ not only look authentic but last considerably longer than traditional wood wall cladding. They are made using autoclave technology and can stand extreme conditions such as high-pressure wind loads and moisture areas. ToroSidings™ have thermal resistance and dimensional stability even under prolonged exposure to moisture. Our traditional wood grain texture is an extremely attractive feature. The smooth finished sidings also give a classic style to your wall.

## Colours Available



Item	Size	Exposure
Smooth Finish	200x2440x8mm	175mm
Wood Finish	200x2440x8mm	175mm

The colour range consists of 8 different colours. Besides these, ToroSidings™ range also includes a paint-it-yourself version (without colour). The ToroSidings™ are lightweight compared to their strength and ability to withstand external extreme conditions and resistant to algae and bacteria and the growth of moss, fungi etc. Our Group has more than 60 years of experience in manufacturing and sales of building materials, and offer sustainable and lasting solutions for your house, building and office complex.

## Fascia

*ToroFascia™* not only looks authentic but lasts considerably longer than traditional wood. They are made using autoclave technology and can stand extreme conditions such as high-pressure wind loads and moisture areas. *ToroFascia™* have thermal resistance and dimensional stability even under prolonged exposure to moisture. The smooth finished give a classic style to your home.



Item	Size (mm)
Smooth Finish	200x2440x12mm
Wood Finish	200x2440x12mm

## Skirting

*Toroskirting™* not only looks authentic but lasts considerably longer than traditional wood skirting. It is made using autoclave technology and can stand extreme conditions such as floods. *Toroskirting™* have thermal resistance and dimensional stability even under prolonged exposure to moisture. Our traditional wood grain texture is a highly attractive feature. The smooth finished skirting also gives a classic style to your home. *Toroskirting™* has a Class 1 Fire Rating certified by SGS international.



Item	Size (mm)
Smooth Finish	100x2440x12mm
Wood Finish	100x2440x12mm

## Soffit

Soffits are key construction elements of a house. It mainly cover the underside of eaves and porch ceiling. *ToroSoffits™* are available in smooth and wood finished. *ToroSoffits™*, thickness available from 3.5mm to 6mm at different dimensions. *ToroSoffits™*, offers moisture resistance, workability and better properties of toughness. *ToroSoffits™*, ideal for wet areas such as kitchen, bathroom, toilets and etc..



Item	Size (mm)
Smooth Finish	300x2440x9mm
Wood Finish	300x2440x9mm

## Barge Board

*ToroBargeBoard™* not only looks authentic but lasts considerably longer than traditional wood. They are made using autoclave technology and can stand extreme conditions such as high-pressure wind loads and moisture areas. *ToroBargeBoard™* have thermal resistance and dimensional stability even under prolonged exposure to moisture. The smooth finished give a classic style to your home.



Item	Size (mm)
Smooth Finish	200x2440x12mm
Wood Finish	200x2440x12mm

# Fence

ToroFence™ offers an excellent alternative to real wood fencing. It can be installed either vertical or horizontal depending on the landscaping needs. ToroFence™ offers both smooth and wood finished with square and round cut. ToroFence™ requires low maintenance and is suitable for both commercial and residential. They are made using autoclave technology and can stand extreme conditions such as high-pressure wind loads and moisture areas. ToroFence™ has thermal resistance and dimensional stability even under prolonged exposure to moisture. The smooth finish gives a classic style to your home and commercial property.



Item	Size (mm)
Smooth Finish (Round Cut)	100x1220x12mm
Wood Finish (Round Cut)	100x1220x12mm
Smooth Finish (Square Cut)	100x2440x12mm
Wood Finish (Square Cut)	100x2440x12mm



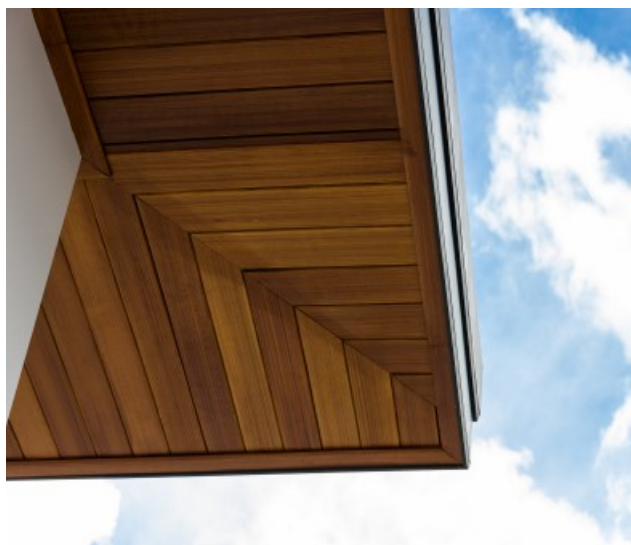
Horizontal Fence



Vertical Fence

# Cladding / Strip Ceiling

ToroWood™ offers an excellent alternative to real wood cladding and ceiling. It can be installed either vertical on the wall or ceiling instead of natural wood. ToroWood™ offers both smooth and wood finished cladding and ceiling sheets with half lap. ToroWood™ requires low maintenance and is suitable for both commercial and residential. They are made using autoclave technology and can stand extreme conditions such as high-pressure wind loads and moisture areas. ToroWood™ has thermal resistance and dimensional stability even under prolonged exposure to moisture. The smooth finish gives a classic style to your home and commercial property.



Item	Size (mm)
Smooth Finish	300x2440x9mm
Wood Finish	300x2440x9mm

# Benefits



## El Toro Board combines the best properties of wood and cement

El Toro Fiber cement boards boast a lower construction cost and is speedy, to construct. The possibility of early completion and commissioning of the site/building, are added benefits. The dry wall system requires less labour and uses less material compared to the normal brick wall system. This is the ideal solution for labour scarcity. It is virtually maintenance-free and highly cost effective.



Toro Fiber cement boards and ceiling sheets are much better than wood, plastic, rubber and steel. Furthermore, fiber cement can deliver significant benefits on warm days because of the materials' inherent ability to cool rapidly at night. This can give relief to sleeping areas in the night.

The board can be fixed using self-drilling Toro Fasteners. The product is lightweight compared to bricks and cement. House-keeping at the construction site will be dry and clean. The board structure is stable and not subject to deformation like wood and other materials.



The performance of the board is stable in all weather conditions. Toro Boards can even be used in wet area after the application of two proper coats of a good water-based Acrylic or alkali-resistant PVA resins. Its performance under wet conditions is far better than Plywood and gypsum Boards.

Class 1 fireproof performance makes the board incombustible. The product will not ignite in case of fire and will not produce any toxic gas or smoke.



Toro Fiber cement boards do not contain anything harmful to human health and nature. The product contains no harmful radioactive materials and gives out no smoke, toxin and peculiar smell in case of a fire. No special handling or precautions are necessary for the product.

Fiber reinforced cement products are impact resistant and much stronger than wood and gypsum.



Safe from termite attacks and fungus and have low water absorption. They don't crack, swell or warp like wood and gypsum board.



El Toro Boards manufactured by using natural ingredients mainly cellulose and silica sand. The manufacturing process also environmental friendly and 100% recyclable.

# Technical Specification



Physical Feature	Unit	Result	Test Method
Thickness Tolerance	mm	±0.2	EN12467
Length Tolerance	mm	±2	EN12467
Width Tolerance	mm	±2	EN12467
Squareness	mm/m	1	EN12467
Density	kg/m <sup>3</sup>	1300±50	EN12467
Modulus of Rupture Value (wet)	Mpa	>7	EN12467
Modulus of Rupture Value (dry)	Mpa	>10	EN12467
Nail ability	Good		
<b>Fire Properties</b>			
Fire Propagation		Class "0" (<2)	BS 476 Part 6
Surface Spread of flame		Class 1	BS 476 Part 7
		Class "A"	ASTM E84
Ignitability		Class "P"	BS 467 Part 5
Combustibility		Non-Combustible	BS 476 Part 4
Smoke Development Index		Class "A"	ASTM E84
<b>Moisture</b>			
Content	%	<10	EN12467
PH		10 to 12	
Water Absorption	%	<30	EN12467
Water Tightness Test		Pass	
<b>Durability Properties</b>			
Freeze/Thaw		PASS	EN12467
Heat-Rain		PASS	EN12467
Warm Water		PASS	EN12467
Soak-dry		PASS	EN12467

(ASTM— American Standard, BS— British Standard, EN—European Standard)

# Certifications



[CarbonNeutral.com](http://CarbonNeutral.com)



## ISO 9001: 2015

Our company is ISO 9001 certified. Therefore, we are committed to meet the customer's quality and regulatory requirements to provide customer satisfaction and maintain an improved performance to address and sustain quality management.

## ISO 14064:1

The ISO 14064 standard (published in 2006) is part of the ISO 14000 series of International Standards for environmental management. The **ISO 14064** standard provides governments, businesses, regions, and other organizations with a set of tools for programs to quantify, monitor, report, and verifies greenhouse gas emissions. Our company is ISO 14064 certified. This standard guides us at an organization level for quantifying, monitoring and reporting of GHG emissions, reductions, and removal.

## CARBON NEUTRAL

A way of negating unavoidable carbon emissions is to pay for greenhouse gas (GHG) reductions to be made via tree planting, wind farms, and hydroelectricity. This is known as **carbon offsetting**. If enough offsets are purchased to balance all emissions remaining after reduction efforts, then the net emissions will be zero. This is known as **carbon neutrality**. Our company business office has been recognized and certified as a Carbon Neutral Company.

## CE

CE marking is a certification mark that indicates conformity with health, safety, and environmental protection standards for products sold within the European Economic Area.

## ISO 45001

Specifies requirements for an occupational health and safety (OH&S) management system, and gives guidance for its use, to enable organizations to provide safe and healthy workplaces by preventing work-related injury and ill health, as well as by proactively improving its OH&S performance.

## CARBON FOOTPRINT

A **carbon footprint** is the total set of greenhouse gas emissions caused by an organization, event, product, or person. The concept was developed by the World Resources Institute and the World Business Council for Sustainable Development to standardize GHG accounting and reporting standards internationally, ensuring a consistent approach to GHG accounting. The GHG Protocol covers the accounting and reporting of the six greenhouse gases covered by the Kyoto Protocol. Our company follows the above principles making all possible efforts to reduce our footprint every year.

## GREEN CERTIFICATE

Green Labeling System has become one of the leading mechanisms in driving the world to be greener; thus, the Green Label's focus on certain environmental aspects such as energy consumption, water use, timber sourcing, etc. Embracing the GLS may lead Sri Lanka to adopt a sustainable practice of using materials or products based on the environmental consequences of their raw material acquisition, manufacturing, product usage, and disposal. GLS is well-recognized locally through the endorsement of the Central Environment Authority and Globally through the GBCSL membership of the World Green Building Council (WGBC) which consists of over 80 countries with more than 200 environment protection organizations having obtained its membership.

## ISO 14001

We conform to the environmental management standards developed by the International Organization for Standardization (ISO), and as such, are ISO 14001 compliant. As per the standard, the company needs to minimize harmful impacts on the environment through its activities.

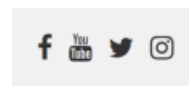
## SGS

Company products are tested in SGS laboratories in Taiwan and China. Product quality and dimensional stability are kept intact.



Made in Sri Lanka

**EL Toro Roofing Products Ltd**  
No. 752, Baseline Road,  
Colombo 09, Sri Lanka.  
T +94112674212 F +942674214 E [headoffice@eltoro.lk](mailto:headoffice@eltoro.lk)  
W [www.eltoro.lk](http://www.eltoro.lk)



[www.eltoro.lk](http://www.eltoro.lk)