

# **MODULAR PANEL SYSTEM & ENCLOSURES**

[www.timikenclosures.com](http://www.timikenclosures.com)

# Introduction

TIMIK Modular Panel System, Enclosures & 19" Racks manufactured with latest technology, are very high quality and manufactured according to relevant international standards and practices.

They are manufactured in an ultra modern production plant installed with hi-tech, modern CNC machinery & Robotic machines.

TIMIK products are designed & manufactured to be one of the best product in the market using best technologies available in the world.

The commitment, investment and continuous Research & Development (R & D), make us in the forefront in the enclosure technology, with best technical solutions.

## TIMIK Range of Products

Modular Panel Systems

Wall Mounting Enclosures

Distribution Boards (Heavy Duty & Light Duty)

Terminal Boxes

Stainless Steel Enclosures

Stainless Steel Terminal Boxes

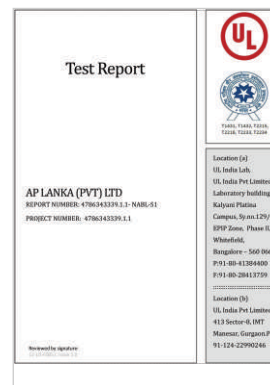
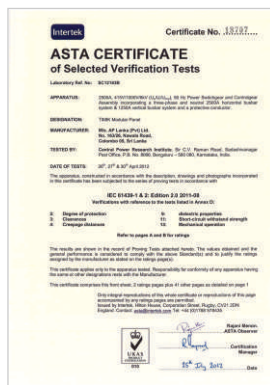
19" Racks

TIMIK Modular Panel System & Enclosures are designed and manufactured according to IEC 61439 (BSEN 61439) standard. Stainless Steel Enclosures & Stainless Steel Terminal Boxes are designed and manufactured according to UL (Underwriter's Laboratory) standards, and Stainless Steel Enclosures are tested to IP66 at UL accredited laboratory.

TIMIK Modular Panels System is made to IP (Index of Protection) class of IP55 and TIMIK wall mounting Enclosures are IP65 tested at UKAS accredited laboratory in the UK.

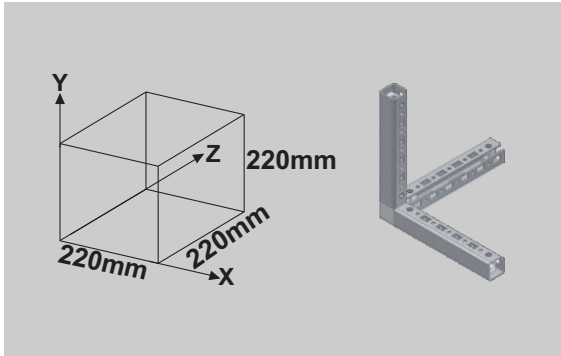


## TIMIK - Technically innovated enclosures made to international standards.



# Modular Panel System

## Modular Concept



TIMIK Modular Panel System is based on the modular concept of “Standard Module” for the construction of electrical panels. TIMIK “Standard Module” can be extended into X, Y & Z or width, height & depth directions in multiplication of “Standard Module”. With this versatile modular concept, It is possible to construct electrical panels of any design, any configuration, or any size, using the range of standard modular parts.

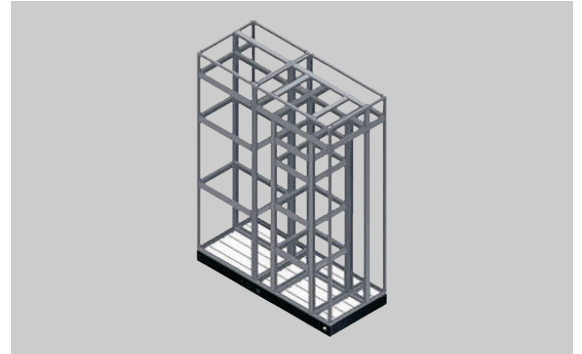
The versatility of the modular system makes it easier to design and faster to assemble, electrical panels with **end-less possibilities**.

TIMIK Modular Panel System can be modified or extended, as per design changes during the panel assembly, during panel building or, even after commissioning; due to standard modular parts and it's **bolted construction**.

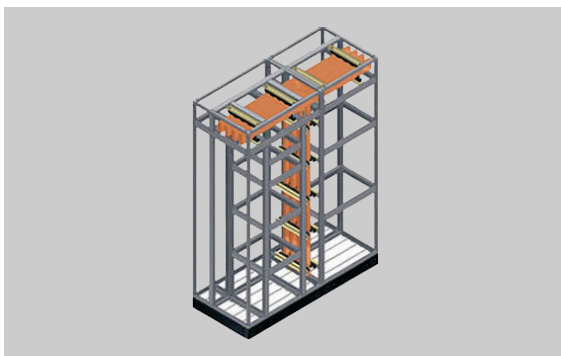
## Structure

TIMIK Modular Panel System has complete modularity in all 3 axis with multiplication of “Standard Module”. This provides the most flexible solution possible. Width, height and depth as well as sizing and placement of any sub-sections are infinitely variable. Many space restrictions can be overcome by making angled or back-to-back arrangements.

Since all components are standard stock items, design changes or other modifications can easily be catered during the assembly phase or on-site.



## Busbars



The busbar system in the TIMIK Modular Panel System is designed to withstand the mechanical and thermal stresses existing during normal service as well as under fault conditions.

Busbars can be arranged in the X, Y planes or in the Z plane. This allows the ultimate flexibility in designing busbar chambers in the TIMIK Modular Panel System.

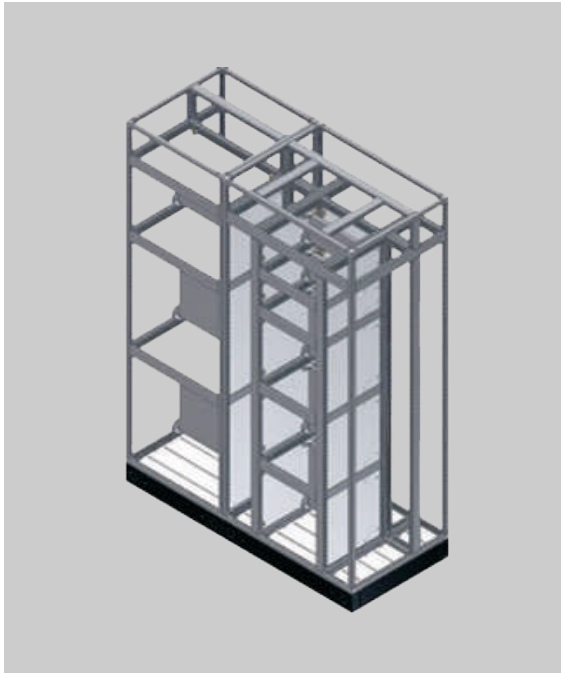
TIMIK busbars are run as twin bars in arrangement of “Twin - Parallel” method. This system facilitate busbar tapping for out-going feeders without drilling holes in busbars.

The busbars are held by clamps and this allows thermal expansion & contraction, without stressing the busbars as no holes are drilled and no bolts are passed across the busbars.

Twin busbars fixed in “Twin - Parallel” manner facilitate heat removal from busbars due to larger skin area for heat dissipation by convection. Better heat removal increases the current carrying capacity of busbars.

# Modular Panel System

## Inserts & Partitions



Different types of inserts can be fixed in the same assembly or section.

The complete modularity of the TIMIK Modular Panel System, enables to fix different inserts of different heights and depths in one column section. This allows complete optimization of design with respect to the overall dimensions of the assembly, heat dissipation, service and maintenance.

An extensive range of standard parts offers complete freedom in designing panels to internal separation from Form 1 to Form 4B - type 7 as per IEC 61439 (BSEN 61439) standards. TIMIK range includes Fixed Compartment Units, Removable Units, Fully Withdrawable Units for design and build of panels of any configuration.



Fully Withdrawable Unit

## Finish

The finish of the panel system is important as it is the most prominent factor that reflect the quality of the product.

All items of the TIMIK Modular Panel System are made to highest quality levels and QC checks are done at every stage of the production process as per ISO 9001 Quality Management System.

Highly advanced production process is carried out using latest models CNC machines and Robotics machines to manufacture TIMIK Modular Panel System.

High quality EG (Electro Galvanized) sheets are used for the production and powder coated, using Epoxy Polyester powder by fully automated powder coating plant to the highest quality.

All these make the TIMIK – one of the best quality Modular Panel System in the world today.



**TIMIK – one of the best quality “Modular Bolted” Panel System in the world today.**

# Wall Mounting Enclosures



**TIMIK Enclosures are tested for IP65 as per standard BS EN 60529:1992 at UKAS accredited testing laboratory in the UK.**

- 1 Die casted concealed hinge for better strength. Door can be fixed to left or right hand side. Door opens 120 degrees.
- 2 Hinges are fixed with non-asbestos jointing fiber washer of ASTM F36/J to prevent dust & water (To maintain the IP rating).
- 3 Door Lock is quarter turn common key lock. Many other types of locks are available as optional items.
- 4 Stud welded Copper earth studs on door and cabin for earthing.
- 5 Polyurethane Foam - in - place (PU-FIP) gasket to maintain IP rating. Tested for IP65 at UKAS accredited testing lab in the UK.
- 6 Provisions are given in the cabin to fix the door in left or right hand side. Extra holes are covered with plastic plugs to maintain the IP rating.
- 7 Mounting Plate is made of Alu-Zinc (Zinc - Alume)
- 8 Mounting Plate is fixed with Copper studs. No bolts are penetrated outside (For better strength and to maintain the IP rating).
- 9 Gland opening is recessed and closed with Gland Plate and sealed with PU-FIP gasket to maintain the IP rating. Many types of Gland Plates are available on request.
- 10 Gland Plate is fixed with Copper studs and no screws are penetrated outside. This is to maintain the IP rating and for better quality.
- 11 Provisions to fix many auxiliary items like Front Plates, MCCB Modules, DIN Modules N&E link Modules, Blank Plates etc. Wall Mounting Enclosures with many other standard accessories give many solutions for Distribution Boards and other electrical assemblies.
- 12 Back embossed with a rib in four sides for extra strength. Back plate is recessed.
- 13 Wall Mounting Box Enclosures can be fixed on to the wall using four holes on the back plate or can use Wall Mounting Brackets available as an optional item.
- 14 Powder coated in textured Epoxy Polyester in RAL 7035 / RAL 7032. Automated powder coating plant with IR curing give durability and looks as new in many years to come.
- 15 Available in many different sizes to meet the requirement ranging from 200 x 200 x 150 mm to 800 x 1200 x 250 mm.

## Distribution Boards (Light Duty / Heavy Duty)

Surface & Flush mounting Distribution Boards (DBs) for all types of electrical installations.

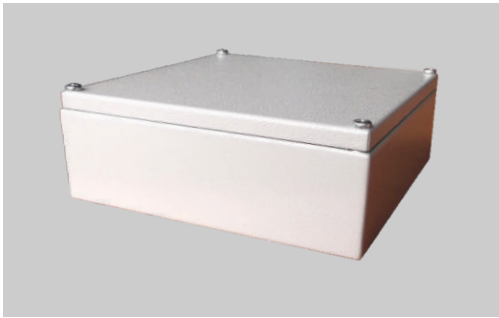


Distribution Boards - Heavy Duty



Distribution Boards - Light Duty

## Terminal Boxes - Mild Steel

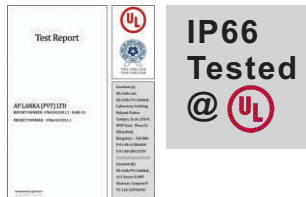


Terminal Boxes are used to fix terminals and supplied with mounting rails to fix DIN rails etc. Terminal Box lid is fixed with 4 screws. Terminal Box can be fixed to wall using mounting holes. Alternatively Wall Mounting Brackets can be used.

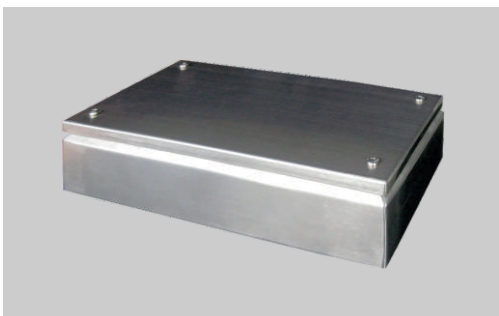
## Enclosures - Stainless Steel - IP66



Stainless Steel Enclosures are available in Stainless Steel GRADE AISI 304, and Stainless Steel GRADE AISI 316. Stainless Steel Enclosure consists of Cabin & Door in Stainless Steel & Mounting Plate in Alu Zinc. Door Lock is quarter turn lock in Stainless Steel with common key. Many other lock options are available on request.



## Terminal Boxes - Stainless Steel



Stainless Steel Terminal Boxes are used to fix terminals. Available in Stainless Steel GRADE AISI 304, and Stainless Steel GRADE AISI 316. Stainless Steel Terminal Boxes are supplied with mounting rails to fix DIN rails etc. and lid is fixed with 4 screws.

# 19" Racks

TIMIK 19" Rack System is an Innovative modular bolted system, and are available as;

- Free Standing 19" Racks
- Wall Mounting 19" Racks



TIMIK 19" Racks are made of standard modular parts, and can be supplied as CKD (Completely Knocked Down) form or completely assembled form.

The assemble of standard modular parts as per customer requirement will make the 19" Rack to suit the customer application. This innovation concept has made TIMIK 19" Racks to be forefront in the market, as it is easier to design, assemble, handle, transport, shipping & can be changed before or after commissioning of the 19" Rack system.

Continuous Research & Development (R & D) work is done to incorporate latest technology and requirements to, TIMIK 19" Rack system. This ensures TIMIK 19" Rack system is designed and manufactured to latest technology & requirements in the industry.

Innovative modular design & application flexibility makes, TIMIK the choice of 19" Rack users for their 19" Rack solutions around the world.

**Wide range of accessories to give total solution on 19" Rack applications.**



**Continuous Research & Development ( R & D) work delivers you the best technical solution for your applications.**

Products, models, specifications given in this catalogue may change without prior notice. For more details please log on to; [www.timikenclosures.com](http://www.timikenclosures.com)

## OUR RANGE OF PRODUCTS

MODULAR PANEL SYSTEM

WALL MOUNTING ENCLOSURES

DISTRIBUTION BOARDS (LIGHT DUTY / HEAVY DUTY)

TERMINAL BOXES

STAINLESS STEEL ENCLOSURES

STAINLESS STEEL TERMINAL BOXES

19" RACKS

### **TIMIK CANADA**

Suite 400, Plaza 3,  
2000 Argentia Rd,  
Mississauga, ON, L5N 1V9  
Canada.

#### **Production Plant**

No : 416/5, Leyland Road,  
Panagoda,  
Sri Lanka.

No 163/26, Nawala Road,  
Colombo 5,  
Sri Lanka.

Tel : ++94-11-2505090  
Fax : ++94-11-2368268

Email : [info@timikenclosures.com](mailto:info@timikenclosures.com)  
Web : [www.timikenclosures.com](http://www.timikenclosures.com)