



A/S Saeby Fiske- Industri

Company Presentation

SAEBY

WORLD LEADING canned mackerel producer

150.000.000

cans of annual production (full capacity)

60.000m²

production/ storage area

30.000 tons

own cell storage capacity (for raw material, -30 °C)

160

employees (135 production + 25 office)

Hand filleting

100%

chemical free production



42,6

acres/hectar outdoor area

Own water filtration facility

(invest of 30 mio €)

Fully automatic packing lines

6.000 pallets

storage capacity of final products

85%

Export (Worldwide)

Quality & Sustainability

- **Ocean's super food - *Scomber Scombrus*:**
 - Omega 3 fatty acids.
 - Vitamin B.
 - Vitamin B12.
 - Iodine.
 - Selenium.
- No artificial additives.
- Wide assortment inclusive bio sauces.



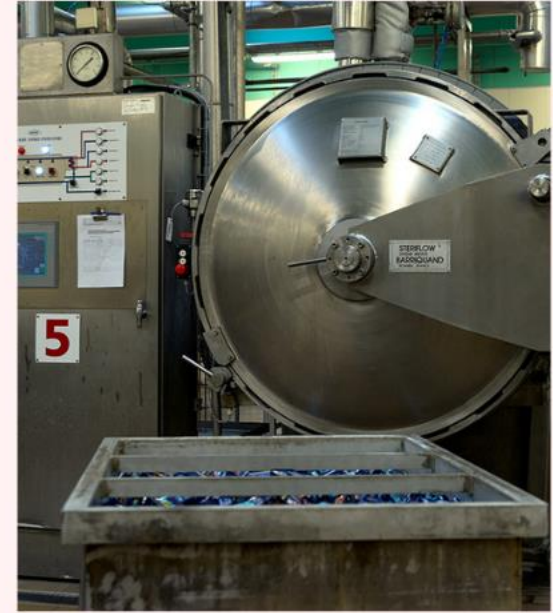
CHEMICAL FREE PRODUCTION



**INSTEAD OF CAUSTIC SODA
AND HYDROCHLORIC ACID, WE
USE HOT WATER & STEAM TO
SKIN THE MACKEREL**



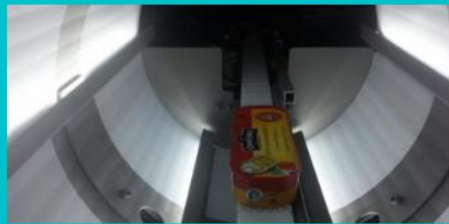
**OUR CANS ARE FREE OF THE
HORMONE-DISRUPTING
CHEMICAL, BPA**



**INSTEAD OF USING
ADDITIVES, OUR CANS ARE
STERILISED, TO ACHIEVE A
NATURAL, LONG SHELF LIFE**

QUALITY CONTROL

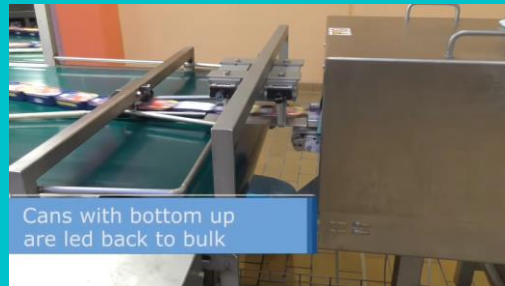
ALL CANS ARE CHECKED FOR DENTS, FAULTS, LEAKS



ALL CANS ARE AUTOCLAVED TO ENSURE THAT THEY ARE STERILE



ALL CANS ARE SUBJECTED TO X-RAY DETECTION



THE CANS ARE KEPT IN INCUBATION STORAGE FOR SEVEN DAYS TO MAKE SURE THAT THEY HAVE BEEN STERILISED CORRECTLY





Full traceability



**EXCLUSIVELY CAUGHT
DURING AUTUMN IN THE
NORTH ATLANTIC**

**IQF FREEZING METHOD -
MACKEREL IS FROZEN INDIVIDUALLY**

**EACH LANDING IS STORED IN
SEPERATE CELLS**

SECURING TRACEABILITY BACK TO:

**CATCH,
POSITION,
TRAWLER**

Trawlers land in Hirtshals Harbour



Mackerel lands in Saeby

Raw material season:

- Locked season
- Prices reflect for the coming year



Short Supply Chain

Catch



Sustainable trawlers



Mackerel freshly lands into the ports of Hirsthals & Skagen



Quality controlled and checked



table



Individually quick frozen



Stored in separate cells

Adaptable Environment

**HIGHLY AUTOMATED ENVIRONMENT
WITH FEW MANUAL WORKERS**

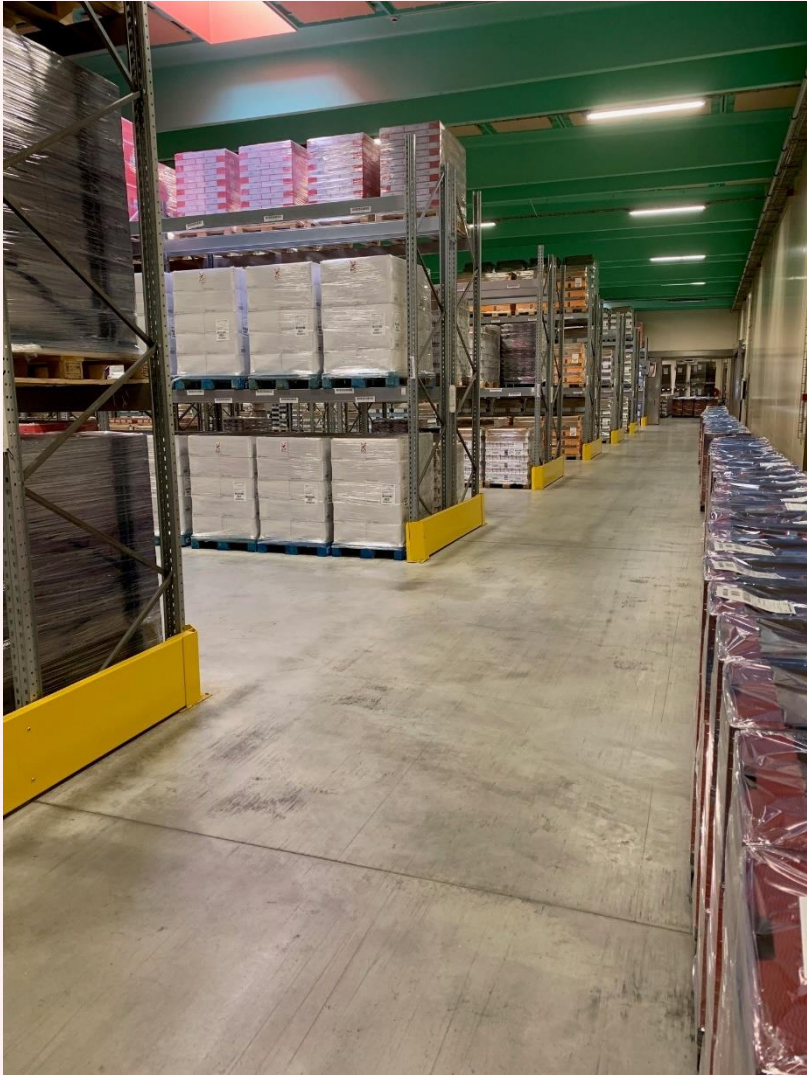
**EASY IMPLEMENTATION OF
SOCIAL DISTANCING**

MINIMAL DISRUPTION OF PRODUCTION

EXTRA PRODUCTION CAPACITY

SUPPLY SECURITY





FOR ETHICAL & RESPONSIBLE
BUSINESS PRACTICES



NAPA SEAFOOD
FOUNDATION

Catch Area FAO27

