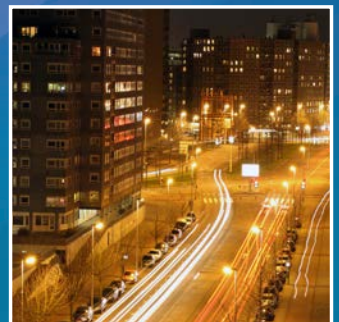
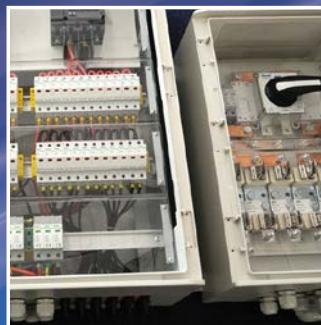
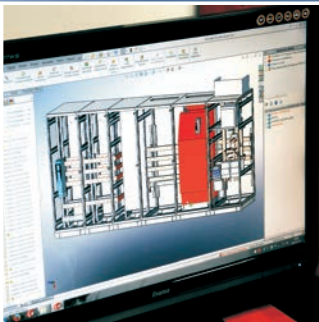
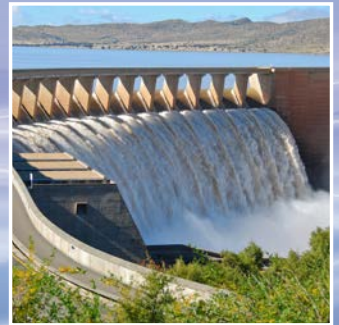


Enclosures & Switchgears



Divides energy, multiplies solutions!



POLYESTER ENCLOSURES

Polyester enclosures are made of self-extinguishing composite (polyester + glass fibre) and have resistance to atmospheric agents (UV). A smooth or ribbed external surface can be selected according to the characteristics of the external environment. In our offer we have got a wide range of cabinets dimensions.

Basic parameters:

- protection class: II
- housing protection grades: IP44, IP54, IP65, IP66
- impact resistance: IK10
- flammability category: V0



OS, OSZ, OSi, OSZi

dimensions:
 - width: 264, 396, 528, 660, 795, 927, 1058 mm,
 - height: 420, 520, 620, 820 mm,
 - depth: 245 mm.

installation options:
 - on pedestal,
 - on the electrical pole,
 - on the building wall.

protection grades:
 - IP44, IP54 (option).



KS, KSZ, KSi, KSZi

dimensions:
 - width: 264, 396, 528, 660, 795, 1058 mm,
 - height: 620, 820 mm,
 - depth: 320 mm.

installation options:
 - on pedestal,
 - on the electrical pole,
 - on the building wall.

protection grades:
 - IP44, IP54 (option).



DC 00, DC 0, DC 1, DC 2 (DIN standard)

dimensions:
 - width: 470, 605, 800, 1130 mm,
 - height: 929 mm,
 - depth: 320 mm.

installation options:
 - on pedestal.

protection grades:
 - IP44, IP54.



DCWE 0, DCWE 1, DCWE 2 (DIN standard)

dimensions:
 - width: 605, 800, 1130 mm,
 - height: 1140 mm,
 - depth: 320 mm.

installation options:
 - on pedestal.

protection grades:
 - IP44, IP54.



STT, STTK, STTF, STO, STOK, STOF

dimensions:
 - width: 800 mm,
 - height: 1154 mm,
 - depth: 640 mm.

installation options:
 - on pedestal,
 - on the electrical pole.

protection grade:
 - IP44.



Masking frames MZG, MZZ

dimensions:
 - width: 572, 972 mm,
 - height: 765, 965 mm.

application:
 - building up of the electrical connector in the recess of the wall.

protection grade:
 - IP44.



LILA

dimensions:
 - width: 284, 411, 460 mm,
 - height: 306, 405, 505, 605 mm,
 - depth: 115, 211, 222 mm.

installation options:
 - in the wall of the building,
 - on the building wall,
 - on the electrical pole.

protection grades:
 - IP44, IP54, IP65, IP66.



HYDRA

dimensions:
 - width: 300, 410, 438, 616, 850 mm,
 - height: 410, 510, 618, 816, 1004 mm,
 - depth: 204, 214, 251, 323 mm.

installation options:
 - on pedestal,
 - on the electrical pole,
 - on the building wall.

protection grades:
 - IP65, IP66.



KH 00

dimensions:
 - width: 245 mm,
 - height: 415 mm,
 - depth: 138 mm.

installation options:
 - on the building wall,
 - in cabinet (as the main protection).

protection grade:
 - IP54.



METAL ENCLOSURES AND CABINETS

Metal enclosures can be produced from the following type of metal sheets (1 – 2 mm of thickness):

- cold rolled steel,
- Aluminium,
- Aluzinc,
- zinc plated steel,
- stainless steel,
- Magnelis.

Basic parameters:

- protection class: I,
- housing protection grades: IP31 – IP65,
- impact resistance: IK10.



OMU
Universal enclosures



OMS
Universal enclosures (tight)



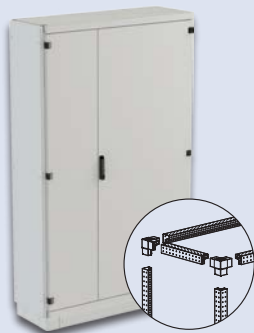
OHS
Hygienic cabinets (tight)



SK Cable cabinets



SR
Panel cabinets



SRN
Modular frame cabinets



SSS
Control cabinets (tight)



ORW
Free-standing switchgear cabinets



ORL
Metering cabinets

CABINETS APPLICATIONS EXAMPLES

CABLE CONNECTORS

Cable connectors are used for separation and protection of circuitry against short circuits and overloads.



CABLE CONNECTORS WITH MEASUREMENT

Cable connectors with measurement are used additionally to build three-phase measurement system and security counter.



TRANSFORMER STATIONS SWITCHGEARS (LOW VOLTAGE)

Transformer stations switchgears are used for the distribution of electricity and for the power supply as well as securing of the equipment in industry and energy sector.



CABINETS APPLICATIONS EXAMPLES

POLE TRANSFORMER STATIONS SWITCHGEARS

For mounting on a pole.



CAPACITOR BATTERIES

Capacitor batteries are used for reactive power compensation in three-phase networks four and five-wire.



TERMINALS FOR CHARGING ELECTRIC VEHICLES

Application: hotels, restaurants, car parks, bus and railway stations, airports, private properties.



BUILDING SWITCHGEARS

The application of switchgears for construction sites: Separation and measurement of electricity on the building site and for the power supply devices operating in the field.



SWITCHGEARS WITH MODULAR DEVICES



INDUSTRIAL SWITCHGEARS



HOUSING SWITCHGEARS



SPECIAL SWITCHGEARS



OTHER APPLICATIONS

Except typical solutions we realize also orders according to the individual customers' needs.



COOPERATION

Thanks to extensive and modern machinery park together with qualified staff our company is ready to cooperate in realisation of non-standards orders.

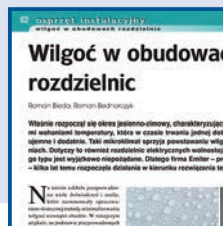
OUR CAPABILITIES

- By usage of **hydraulic presses** in quantities of 54 pieces with the load of up to 2000 tons each we are able to produce small and big dimensions thermoset elements (SMC) which could be used among others in:
 - building industry,
 - transportation,
 - railways,
 - automotive industry.
- Using modern **injection molding machines for thermoplastics** we can offer services in the following sectors:
 - electro technical,
 - medical,
 - packaging,
 - automotive sector.
- Using free capacities of presses and injection molding machines together with **having rich machinery park (milling machines, lathes, electroerosion machines)** we are ready to accept production orders of different components together with designing and implementation of customised tool(mold) before the production process.
- Punching machines and CNC press brakes** allow us to produce parts from sheet metal up to 3 mm thickness.
- We also have got a modern **painting line for powder coating** according to the RAL colour palette.



QUALITY AND LOGISTICS

- In 2003, we implemented a **Quality Management System ISO 9001** to improve management of different processes. This helps us maintain the quality of our products at a high level.
- In order to meet the requirements of the standards for switchboards cabinets and switchgears all our products are **tested in certified research centres in Poland and abroad**.
- Taking care of the engineering and technology steady progress of our products we additionally conduct **research on our own**. The results of some observations we publish as articles in the trade press.
- Implementation of **AEO** (Authorised Economic Operator)
- To achieve satisfactory efficiency and profitability of the business we decided to implement for our needs **CDN XL System of Comarch Company**. CDN XL System supports in our company both production & logistics processes as well as financial management. Thanks to the modifications and the development of additional functionality, the system also supports inventory management based on the use of mobile devices. It integrates the processes carried out in several locations and production plants helping to monitor costs and to make management decisions.



EMITER COMPANY

- Long tradition – **30 years on the market**
 - **100% Polish capital**
 - Headquarters in **Limanowa**
 - Branches in **Zgierz, Gdańsk, Lublin**
 - 2 production plants in Poland (Pisarzowa, Radymno)
 - Approx. 500 employees.
- Development of the company:
 - implementation of the **Quality Management System ISO 9001**,
 - implementation of the **Integrated Company Management System – ERP**,
 - launching of the **tool room**,
 - establishment of the **new department Metal Enclosures Production** in Limanowa head-quarter.



SALE



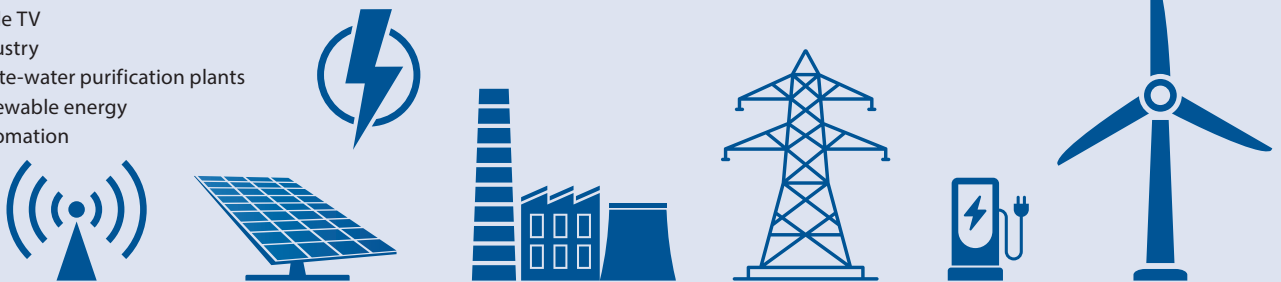
EKSPORT

- Almost all countries in Europe
- West Asia
- Australia
- Africa.



PRODUCT APPLICATIONS

- power engineering
- telecommunication
- cable TV
- industry
- waste-water purification plants
- renewable energy
- automation



ZUP EMITER sp. z o.o.
 ul. Skrudlak 3
 PL 34-600 Limanowa
 +48 18 337 00 94
 export@emiter.com
 www.emiter.com

