



# InnovITech at the forefront of scientific and technological research development

**InnovITech Ltd.**  
[www.innovitech.hu](http://www.innovitech.hu)

**Connect us:**  
mail: [info@innovitech.hu](mailto:info@innovitech.hu)

Tel.: (+36 1) 580 2266  
1037 Budapest, Montevideó utca 7.

# Get to know our Team



Established in 2011.



Located in Budapest (HQ) and two other major university cities (site offices).



Highly qualified, academic level professionals.



The current number of our experts is 100.

# General and Special Competencies



## Full Stack Project Development & Consultancy

Project management, software design, development and quality assurance.

(Agile&Scrum, UML, Java, .NET, Microservices, Angular, React, Android, iOS, Python, DWH, BI)

## Special Capabilities

Developing extremely high loaded systems  
Focusing on high quality software architecture  
Machine Learning, Bioinformatics, Big Data



## Research and Development

Cooperation with major research institutes and universities in the region.

# Business Target Areas

1

**Healthcare**

2

**Fintech**

3

**Public Administration**

4

**Manufacturing and Logistics**

# R&D Projects in Healthcare

Based on Machine learning, BigData, Bioinformatics



## CTA

- Cancer Treatment Assistant
- Increase treatment efficiency
- In cooperation with a major Hungarian medical university (Semmelweis)



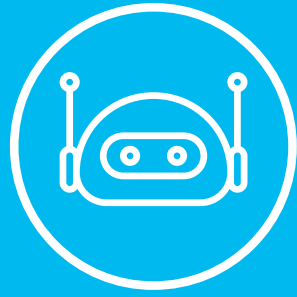
## METAGENOM

- Automated analysis of correlation between mental illnesses and microbiome patterns
- Advanced taxonomy annotator system
- In cooperation with a regional science university (Debrecen)



## GENOMATLAS

- 3D genome structure visualization
- Visual aid to simplify the genome structure analysis
- It supports early-diagnostics



## GRAPLER

- Precision agriculture platform for grapevine pruning
- Offroad rover navigations and pruning vector realizations
- Based on cutting edge Machine Learning and image processing algorithms
- In cooperation with University of Pécs



## JAVAFITTER

- Machine learning based source code structure analysis
- Eliminate decision structure anomalies
- Automated code refactoring
- In cooperation with Károly Eszterházy University



## EXCHANGE RATE FORECAST

- Developing new generation of financial services based on machine learning procedures.



## IBB INFOBANK&BROKER

- Market platform for value based information.

**R&D in the Agricultural, Fintech and Quality Assurance**



## Takarékbank

- Notification management system
- DWH implementation by Oracle
- Commission data market
- Mobile banking



## OTP Mobil

- Simple mobile applications
- Simple.hu
- DWH based on Microsoft Azure, Power BI



## Allianz Insurance

- Commission management
- HOBOpus Core, DWH, BI, Big Data, CCM, Oracle, MS, Cloudera



## Hungarian National Bank

- DWH implementation - MS SQL Server, MSAS, Power BI



## Magnet Bank

- IFF - Factoring, general ledger

# Manufacturing & Logistics

1

## Indonesian e-toll system development

Implementation of core system.



2

## INNOERP

Special warehouse and inventory management



3

## Express One

Business intelligence development for transportation



4

## HUGO

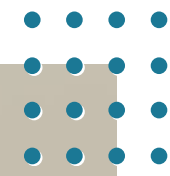
Hungarian E-Toll System





# DWH and BI Developments:

- **NAV (National tax office):** ITAR – integrated Oracle-based data warehouse
- **OTP Mobil:** Microsoft Azure platform, Power BI
- **Takarékbank:** Oracle, ODI, Enterprise Architect ETL, IFSR, Commission data market
- **Hungarian State Treasury:** Cloudera Big Data Cluster, MS technologies, Power BI
- **Allianz:** HOBOpus Core, DWH, BI, Big Data BI, CCM, Oracle, MS, Cloudera
- **Hungarian National Bank:** MS SQL Server, MSAS, Power BI
- **NFH - National Authority for Consumer Protection:** MS SQL Server, SSIS, Power BI
- **NIF - National Infrastructure Developer:** Power BI introduction, MS SQL Server, SSAS, SSIS
- **National Toll Service Provider:** DWH audit
- **Express One:** Power BI introduction, MS SQL Server, SSAS, SSIS



# Public Administration developments:

- **NAV (Hungarian National Tax and Customs Administration):** Online Invoice handling: Java, Oracle, WildFly Swarm, Microservices, Jax-RS, CDI(Weld), Hibernate, Detalspike, Angular, Docker
- **HUGO - National Toll Service Provider:** Java, Oracle, JBoss, Servlet, Resteasy, JMS, Quartz, Asterisk, CDI, Deltaspik, JPA, Hibernate, JSF, DWH audit
- **EKAER (Hungarian E-Public Road Trade Control System):** Java, JBoss, Oracle, Servlet, JSON, XML, Resteasy, CDI, Deltaspik, JPA, Hibernate
- **Hungarian Ministry of Agriculture – Project and development audit**
- **NAV (Hungarian National Tax and Customs Administration):** ITAR – integrated Oracle-based data warehouse
- **Hungarian State Treasury:** Cloudera Big Data Cluster, MS technologies, Power BI
- **Hungarian National Bank:** MS SQL Server, MSAS, Power BI
- **NFH - National Authority for Consumer Protection:** MS SQL Server, SSIS, Power BI
- **NIF - National Infrastructure Developer:** Power BI introduction, MS SQL Server, SSAS, SSIS



# Technological Competencies

## SOFTWARE DEVELOPMENTS

Programming languages and extending technologies:

- **Backend:** Java - EE, Spring, JPA, JAX-RS, Swagger; .NET
- **Frontend:** Angular, React
- **Mobil applications:** Android, iOS, cross-platforms
- **Architecture and devops:** Microservices, WildFly Swarm, Docker, Docker compose, Docker build, Kubernetes, OpenShift
- **System integration:** Maven, Jenkins, Gitlab CI/CD
- **Databases:** Oracle, MySQL, PostgreSQL, MS SQL, MongoDB, Cloud SQL

## MACHINE LEARNING

- **Tasks:** Analysing relevant publications, large scale data handling and augmentation, building-configuration-learning-evaluation of neural nets
- **Technologies:** Python, PyTorch, Yolo, Tensorflow, numpy, Pandas, Jupyter-Lab

## DWH AND BIGDATA

- **DWH, BigData, BI:** MS Azure, MS SQL Server, Power BI, MS Integration Services, MS Analysis Services, Azure SQL Database, Azure Analysis Services, Cloudera Big Data
- **Cloud, MS Azure:** Synapse Analytics, Data Lake, Analysis Services, Power BI
- **On prem:** SQL Server, Power BI, Integration Services, Analysis Services, Oracle, SAP Hana, Clouder

## QUALITY INSURANCE

- **Source code analysis:** FindBugs, Checkstyle, PMD, Eclipse metrics plugin, „C&K” metrics, Sonar
- **Functional testing:** Testcase tracking by Redmine or Jira
- **Test automation:** Selenideum, TestNG, SoapUI, JMeter

## SOFTWARE DESIGN

- Business analysis
- Functional and technical modelling
- UML specific representation of model artifacts

## PROJECT LEADING

- Agile&Scrum
- Rational Unified Process



**Thank you for your  
interest in us!**

[www.innovITech.hu](http://www.innovITech.hu)