



**WOODWORKING
TOOLS**





History

- 2023** - Launching the integrated automatic shank tools production system - AIMS.
- 2021** - Expanding the range of shank tools for wood, steel and aluminum.
- 2020** - Putting to use a new production facility of the N3 department.
- 2018** - Construction of new production facility with the area of 2800 square meters with office space for designers and engineers.
- 2011-2016** - Modernization and development of production facilities. Increasing production space by 2300 m².
- 2010** - Starting the production of tools for metal machining.
- 2007** – **FABA Service** company is established in Ukraine.
- 2003** – **FABA – Slovakia** company is established.
- 2002** – **FABA-DI** - a company producing tools with PCD tips is established.
- 2000** – **FABA S.A.** starts manufacturing tools with PCD tips.
- 1999** – **FABA S.A.** receives ISO 9001 quality certificate.
- 1992** – **FABA S.A.** launches production of circular saw blades for cutting wood.
- 1991** – **FABA S.A.** is registered as a joint stock company, modernization of cutter production department, the beginning of dynamic development.
- 1953** – Cutting tools production is started.
- 1947** – Repair workshop is opened.

Technology

FABA uses the most advanced production technology in the field of metal machining, diamond tips and others.

Owing to modern, tested machines and state-of-the-art technologies our tools are characterized by performance excellence, long blade life and the highest quality.

Our offer includes:

- saw blades,
- profile tools,
- shank tools,
- cutter heads,
- drills,
- diamond tools,
- clamping systems.





FABA is a Polish leader and one of the European top producers of professional woodworking tools for furniture and sawmill industry. **FABA S.A.** was founded in 1991 as joint stock company, owned exclusively by private persons. Presently, **FABA** has in Poland 4 factory outlets, 5 dealer shops and a team of sales representatives responsible for sales and technical advisory in the biggest and most modern companies in Poland. **FABA's** experience and expertise allows the company to offer the highest quality tools both as standard products and custom tools produced on customer's request. The tools are offered in Poland and in almost 50 countries all over the world.



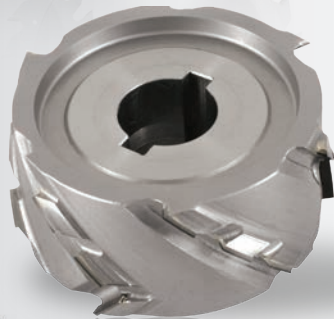
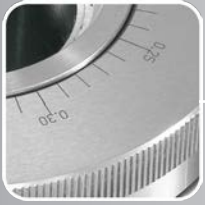
All **FABA** tools are manufactured in the production plant in Baboszewo using the latest technological solutions. The whole production plant has an area of four hectares with four production halls equipped with a state-of-the-art machine facility. Experienced staff of designers and engineers work day by day to improve the current solutions. The tools are manufactured in line with the latest technical developments using materials of renowned European producers. We also take advantage of our suppliers' experience and advisory to

use this knowledge in improving our products. All of these, result in performance excellence, extraordinary precision, long blade life and still increasing customers' recognition of our tools.

The company pays special attention to the quality of offered tools. We keep the highest production standards. Quality control begins with designing stage, which together with modern manufacturing technologies, allows for keeping the highest standards. Control and measurements of every produced tool are performed with modern, computer-operated machines. Manufacturing precision of the tools results in maintaining identical performance characteristics of every batch of products. In mid-2023 was launched at FABA AIMS(Anca Integrated Manufacturing System) and FABA is the first company in the world to implement this project. The advanced automation system is a pioneering, highly innovative production system. The system increases productivity and repeatability of manufactured tools.



Tools with DP tips (DIA)



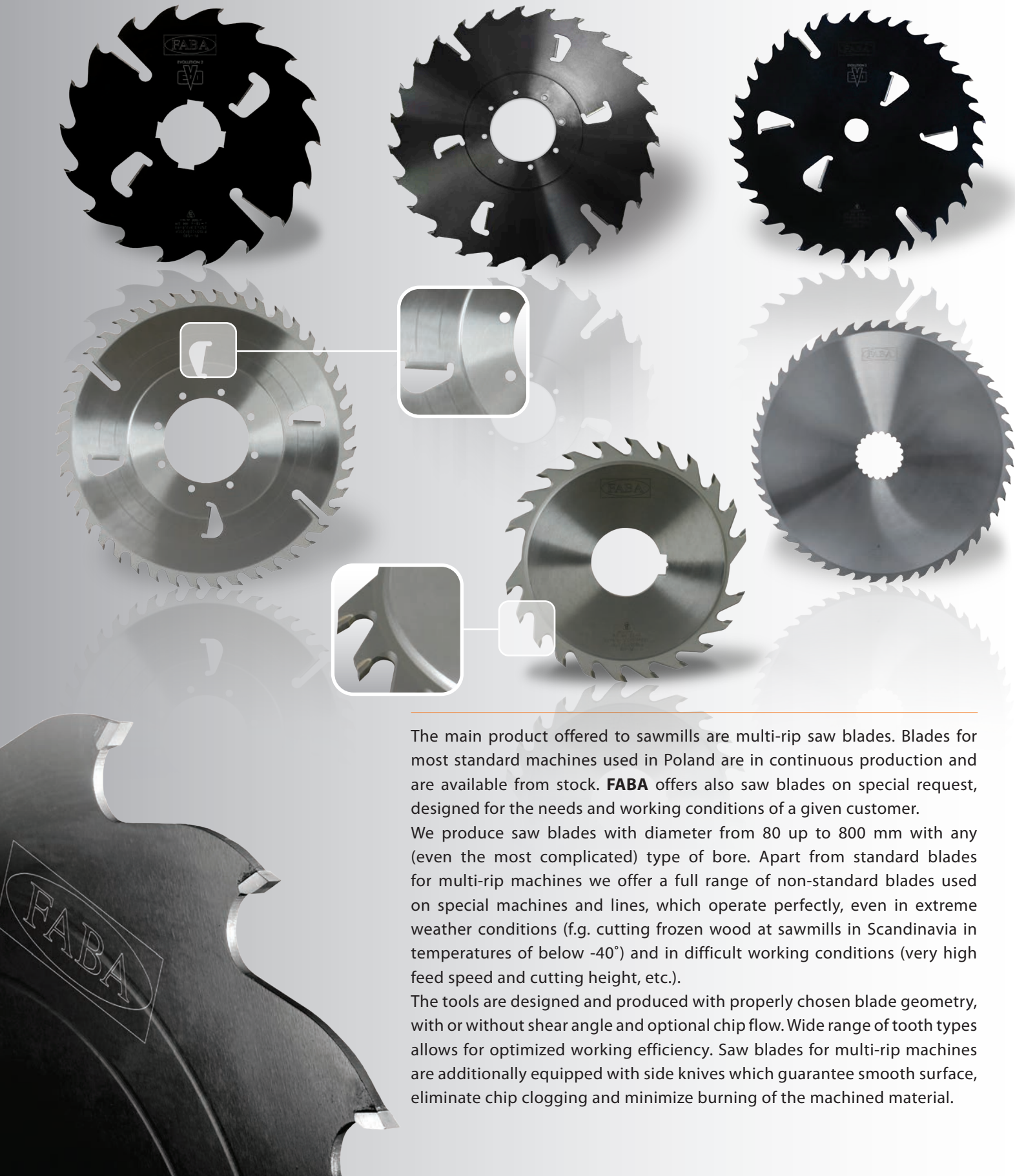


We offer highly efficient tools with DP tips (DIA) for professional machining of wood-based materials. Use and selection of a proper diamond significantly increases life of the tools. The tools are offered with various kinds of clamping in order to reduce radial run-out to minimum and achieve perfect balancing of the tool. It results in very high quality of the machined surface and allows for higher working speed.

A wide range of shank cutters, brazed cutters, hogsers as well as saw blades and scorers is designed to guarantee:

- high work efficiency,
- long life of tools,
- high surface quality,
- quiet and stable work,
- reduced unit production cost.

Saw blades for sawmills

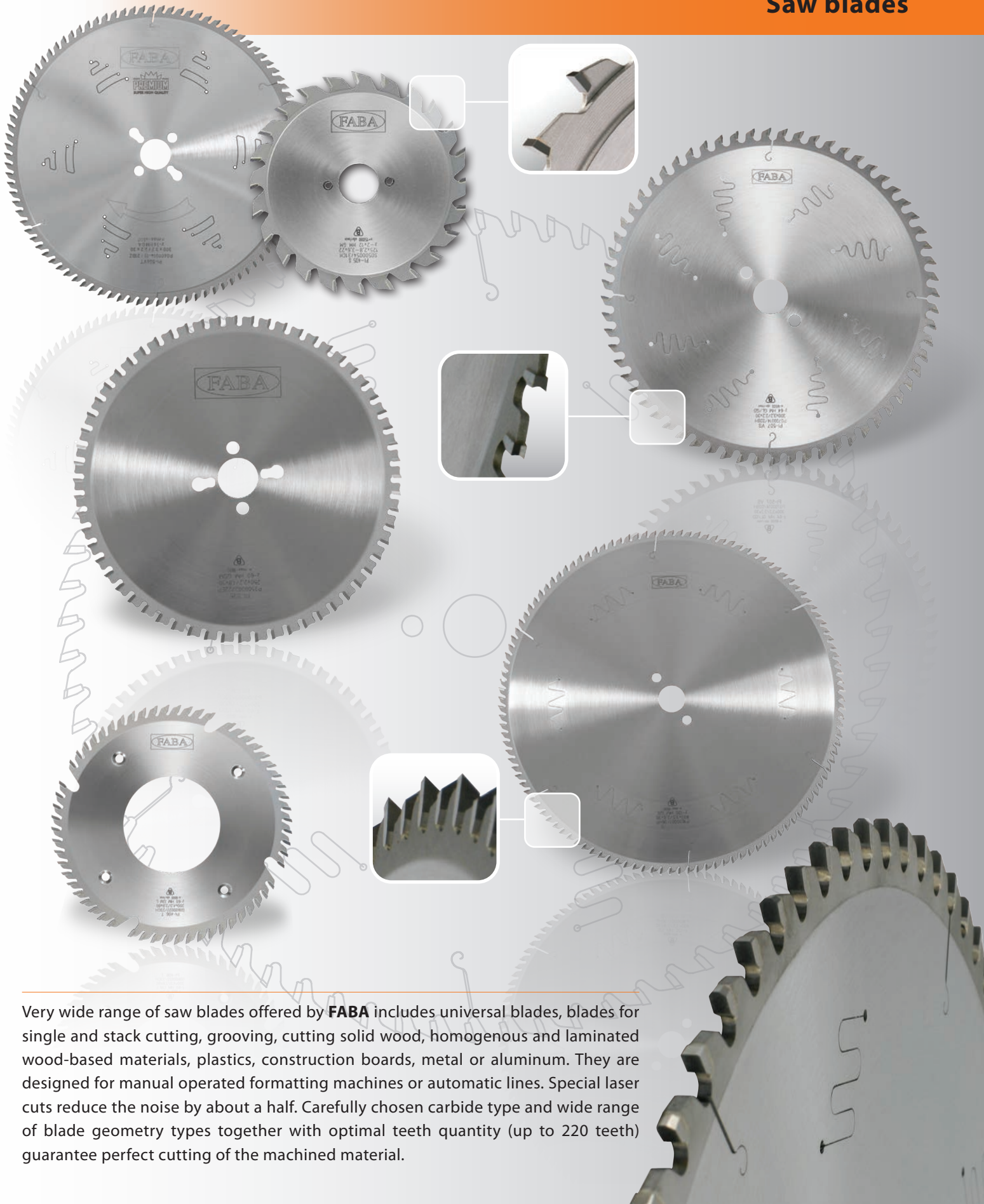


The main product offered to sawmills are multi-rip saw blades. Blades for most standard machines used in Poland are in continuous production and are available from stock. **FABA** offers also saw blades on special request, designed for the needs and working conditions of a given customer.

We produce saw blades with diameter from 80 up to 800 mm with any (even the most complicated) type of bore. Apart from standard blades for multi-rip machines we offer a full range of non-standard blades used on special machines and lines, which operate perfectly, even in extreme weather conditions (f.g. cutting frozen wood at sawmills in Scandinavia in temperatures of below -40°) and in difficult working conditions (very high feed speed and cutting height, etc.).

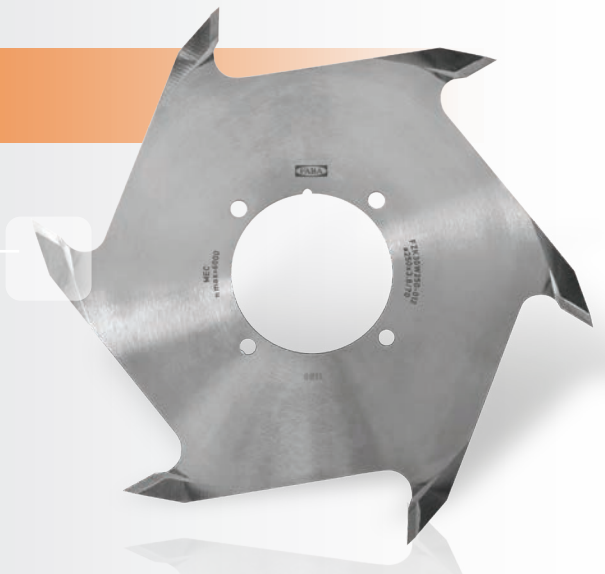
The tools are designed and produced with properly chosen blade geometry, with or without shear angle and optional chip flow. Wide range of tooth types allows for optimized working efficiency. Saw blades for multi-rip machines are additionally equipped with side knives which guarantee smooth surface, eliminate chip clogging and minimize burning of the machined material.

Saw blades



Very wide range of saw blades offered by **FABA** includes universal blades, blades for single and stack cutting, grooving, cutting solid wood, homogenous and laminated wood-based materials, plastics, construction boards, metal or aluminum. They are designed for manual operated formatting machines or automatic lines. Special laser cuts reduce the noise by about a half. Carefully chosen carbide type and wide range of blade geometry types together with optimal teeth quantity (up to 220 teeth) guarantee perfect cutting of the machined material.

Jointing tools



Jointing tools are used for making finger joints in wood for permanent jointing of elements used mostly in construction woodworking. **FABA** offers brazed cutters and cutter heads for finger joints with standard dimensions (10/10, 10/11, 15/15, 15/16,5, 20/20, 20/22). Brazed cutters from high speed cutting steel or carbide as well as cutter heads with exchangeable inserts are designed for solid soft and hard wood, for jointing elements along and across the grain. The tools work on manual feed machines and automatic lines with formatting saw blades.



Modern hydro clamping solutions are used in cutting tools, cutter heads and sets of saw blades. Tools with hydraulic clamping are designed for professional, very precise machining of solid wood surfaces and for profiling. The construction of tools with hydro clamping guarantees tolerance of radial run-out reduced to minimum, which automatically results in very precise positioning of the tool blades on the machine spindle. The hydro system allows for perfect balancing of the tools, which reduces vibration and enables working with very high cutting and feed speed.

Planer and pre-planer heads



Planer and pre-planer cutter heads with properly chosen number of cutting teeth are designed for professional machining of solid wood. They are used for pre-planing and surface finishing. The cutter head body can be made from steel or aluminum alloys.

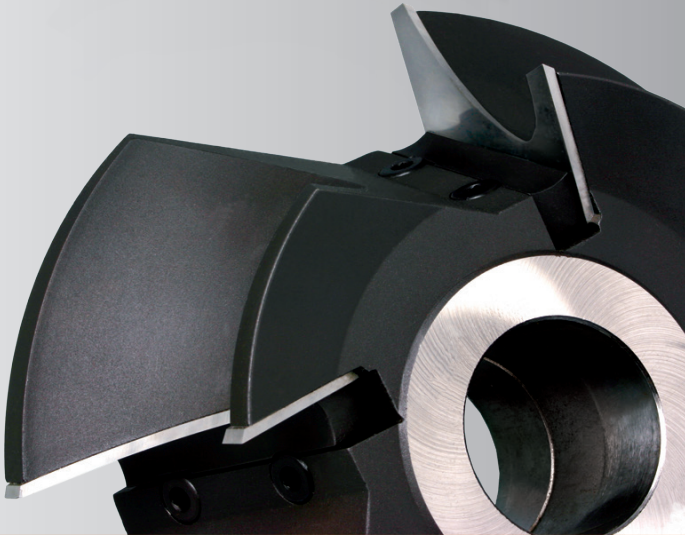
Knives installed in the cutter heads are made from carbide (HM) or high speed cutting steel (HSS), optionally with special coating (HP or HX).

The cutter heads designed for very precise finishing are equipped with hydro clamping system.

Profile brazed cutters and cutter heads



We offer modern cutter heads with exchangeable knives from high speed cutting steel (HSS) and carbide (HM). Profile cutters with brazed tips from high speed cutting steel (HSS) are designed for solid wood and cutters with carbide blades (HM) are designed for professional machining of glued wood, MDF boards and other wood-based materials. Wide range of standard tools, both single as in sets, designed for batten profiling, edge beveling, wainscots, floor board or parquet production, resin pocket filling or for "garden program" is complemented with tools produced on special request. The constructions including shear angle, optimized chip flow, special clamping types are designed for professional, very precise machining with high feed speed.



Tools with HSK 85 clamping



Tools with HSK 85 clamping thanks to very high manufacturing precision of both the clamping system itself as well as the working part, allow for obtaining perfect surface quality.

A perfectly balanced tool together with precisely sharpened cutting teeth (for planing or profiling) gives great opportunities for wooden element producers.

Tools with HSK 85 clamping allow for work with doubled rotation speed (up to $n_{max}=12000$ r.p.m.) compared with traditional tools.



Sets for window and door production are offered as cutter heads with exchangeable carbide inserts (HM) or as brazed cutters. They are designed for wooden windows or wood-aluminum (stile profiling, tenon and mortise making). The sets are mounted on sleeves or HSK shanks. Apart from our own solutions for window and door production we suggest, design and produce special tools on customer's request.

Drills, monolith HM drills, clamping systems



FABA offers a very wide range of drills for dowel and through drilling as well as profile drills with a complex shape. What makes **FABA** offer so special, is the fact that, as one of very few companies worldwide, we combine quality and long life of full carbide tools with functionality of brazed tools.

Solid carbide spiral cutters (THM) made from high speed steel (HSS) or entirely from carbide (HM) designed for CNC machines are offered with various blade geometry and are widely used for machining of solid wood and wood-based materials.

Apart from traditional geometry designed for dowel and through drilling, on special request we offer step drills, profile drills and monolith spiral step drills of perfect quality. They are highly specialized tools with very long life designed for highly efficient machining. Using these tools significantly reduces the price of the final product, especially in mass production.

The offer of drills and shank tools is complemented with a wide choice of collet chucks and shanks with HSK 50F, HSK 63F and ISO 30.

Shank brazed cutters and cutter heads



Shank tools are offered as cutter heads with exchangeable carbide inserts (HM) or as brazed cutters with HSS or HM tips. The tools are used for dowel and through drilling, grooving, rebating, edge profiling with complex shapes and nesting.

Shank tools produced by **FABA** are designed for CNC machines.

Most of shank tools are produced on customer's special request. The tools are designed and manufactured according to the machine requirements and type of the machined material.





FABA S.A.

ul. Przemysłowa 1, 09-130 Baboszewo
Poland

tel.: +48 23 66 21 715
e-mail: export@faba.pl

www.faba.pl
 [Fabababoszewo](#)

