



PLATIO



# PLATIO SOLAR PAVER

## ■ datasheet

**PLATIO SOLAR** is a Hungarian green tech company focusing on creating sustainable building materials. Our company is the developer and manufacturer of **PLATIO** solar pavement.

**PLATIO** is an innovative, solar paver tile, that provides clean energy source, also is an eco-friendly product, as its base is made out of recycled plastic. By combining these features, our product is a double green building material. **PLATIO** functions as traditional solar panels, and we offer an aesthetic and space-saving solution for areas where conventional solar technologies cannot be deployed.

Application areas of **PLATIO** are the following:

- residential (pavement, terraces, driveways),
- public (sidewalks, parks, bicycle roads, marinas, low traffic roads)
- industrial (office and other buildings, warehouses, rooftops)
- off-grid solutions: EV charging systems or outdoor utensils (smart bench, outdoor ad screens)

We offer the **PLATIO paver with OPAL glass** and monocrystalline solar cells.

Product features:



### FAST & EASY INSTALLATION

Installation is fast and easy to execute, similar to conventional tiling. No heavy duty equipment is necessary.



### DURABILITY

High quality engineering ensures resistance to load, impact, scratches and weather, while providing vandalism resilience.



### SIMPLE TO OPERATE AND MAINTAIN

Platio is userfriendly and is maintained like any conventional pavement.



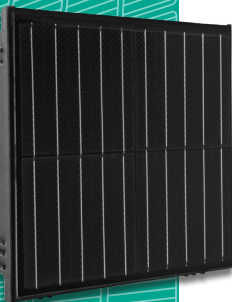
### SAFETY

Platio operates on safe low voltage and provides the highest available level of anti skidding.



### EFFICACY

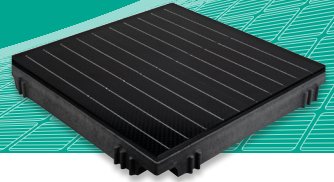
Green energy is harvested by high performing solar cells that are integrated into the pavement.





# PLATIO SOLAR PAVER

## ▪ Datasheet



### GENERAL DATA

Sizes mm	353 x 353 x 41 mm
Joint gap (by spacers) mm	6 mm
Size with gaps (for planning) mm	359 x 359 grid
Surface	gross (with joints): 0,129 net: 0,125 m <sup>2</sup> / piece
Material requirements	7,752 pieces / m <sup>2</sup>
Weight	6,5 kg / piece
Upper surface	10 mm tempered glass - extra clear material
Surface treatment method	Opal: blasted surface with coating
Anti-skid	R11 according to DIN 51 130
Frame material	Recycled polymer composite; LDPE and HDPE copolymer with matrix-forming material
Recycled material	100% plastic
Cable type	14 AWG Red: + Black: -; heat resistant till 105°C; resistant to petroleum derivatives
IP protection	IP68
Connector type	IP68; no wire stripping necessary; scotchlok type coolsplice connector

### TEMPERATURE COEFFICIENT

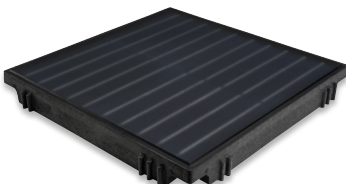
Power	-0,36 %/°C
Voltage	-0,36 %/°C
Current	+0,06 %/°C
Standard test condition	AM 1,5 - 1000 W/m <sup>2</sup> - 25°C

### LIMIT VALUES

Maximum system voltage	120 VDC
Maximum system current	20 A
Maximum allowed vehicle wheel load	2000 kg / pcs

### WARRANTY

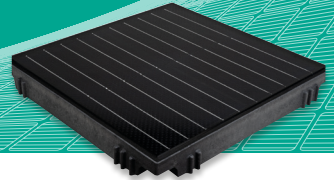
Product guarantee	5 year
Standards	CE, ISO 9001: 2015 - SELV / DC





# PLATIO SOLAR PAVER

## ▪ Datasheet



## CLEAN ENERGY FROM THE PAVEMENT

### ENVIRONMENT PROTECTION AND CIRCULAR ECONOMY

<b>Reuse</b>	If it has no visible traces of external damage the product is suitable as a cover for walking surfaces even after the life of the solar cells (decades).
<b>Recycle</b>	If removing the glass surface: form a 3-5 mm fraction with a hammer grinder Without removing the glass surface: 0/1 (d / D) material formation with a hammer grinder
<b>Adding recycled material to a new product</b>	In the whole composite: max. 20
<b>Responsibility</b>	Our company recycles the product free of charge in case of delivery to the manufacturing site for an unlimited time from its production

### OPAL PAVER CELL DATA

<b>Cell type</b>	Monocrystalline
<b>Cell size</b>	158,75x158,75 mm
<b>Cells in modules</b>	4 pcs
<b>Solar cells nominal power per sq meter*</b>	174,34 Wp/m <sup>2</sup>
<b>Solar cells nominal power per pc*</b>	22,49 Wp/pcs
<b>Product nominal power per sq meter**</b>	142,1 Wp/m <sup>2</sup>
<b>Product nominal power per pc**</b>	18,33 Wp/pcs
<b>Open circuit voltage</b>	2,68 UOC (V)
<b>Short circuit current</b>	10,14 ISC (A)
<b>Cell's efficiency</b>	22,30%
<b>Product efficiency</b>	18,17%
<b>Voltage U<sub>mp</sub></b>	2,31 V
<b>Current I<sub>mp</sub></b>	9,73 A
<b>Power deviation</b>	±7%

\* as per cell producer's Data Sheet

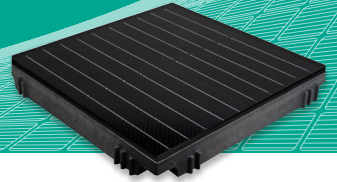
\*\* according to IEC 61215-2:2021

CAUTION: Read safety and installation instructions before using the product.

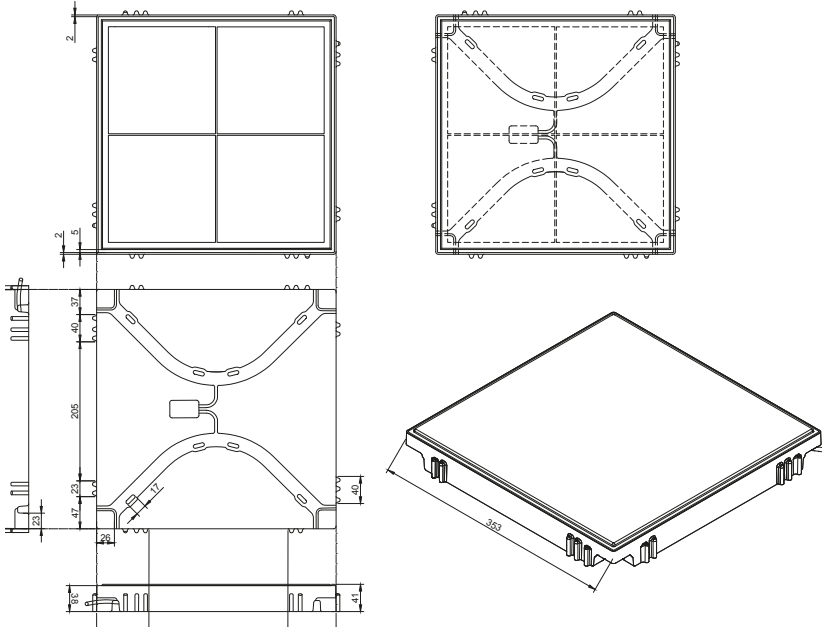


# PLATIO SOLAR PAVER

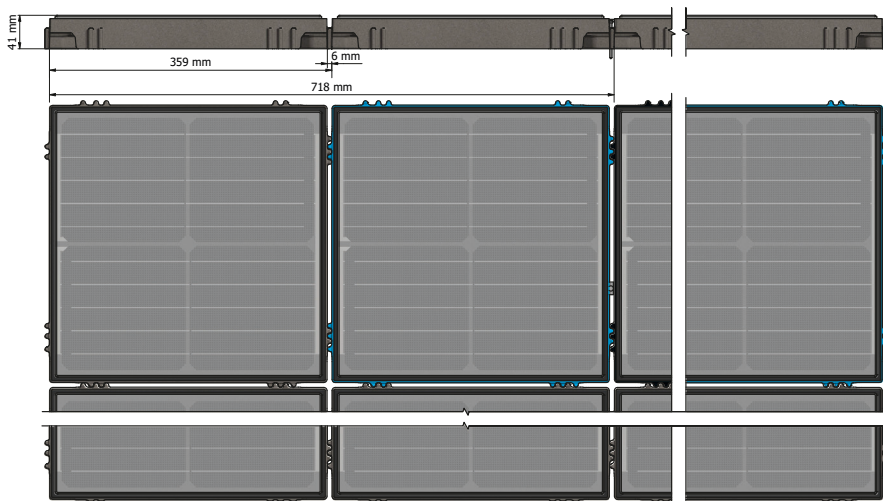
■ Datasheet



## PRODUCT TECHNICAL DRAWING



## SYSTEM LAYOUT



©PLATIO. All rights reserved.

Specifications included in this datasheet are subject to change without notice.

Version 2024/1.