

PLATIO SOLAR PRESENTATION

The time has come for aesthetic renewable energy resources.
PLATIO - the innovative paving manufacturer.



PLATIO

© PLATIO. ALL RIGHTS RESERVED.



Building-Integrated Photovoltaics (BIPV)

integrates solar technology into building materials like facades, roofs, and walkable surfaces, generating clean energy while enhancing design and functionality.

Key Features of BIPV:

- Combines aesthetics with renewable energy.
- Serves as both a building material and energy source.
- Eliminates the need for extra solar infrastructure.

Why?

- Design Freedom: Seamlessly integrates solar into architecture.
- Sustainability: Supports green building standards.
- Efficiency: Transforms unused spaces into energy sources.

SOLAR DECK



SOLAR PAVER

PLATIO Solar redefines outdoor spaces with its energy-generating products, the **Solar Deck** and **Solar Paver**

SOLAR DECKING



SOLAR PAVING



PRODUCT BENEFITS

SOLAR DECK



WALKABLE
Up to 300 kg

- ✓ Quick and easy installation
- ✓ Durability
- ✓ Safe (SELV) system with anti-slip protection
- ✓ Space-saving solution

SOLAR PAVER



DRIVEABLE
Up to 2 tons

PRODUCT SPECIFICATIONS

DURABLE FRAME

The robust frame structure ensures exceptional load-bearing capacity [GP1] and durability.

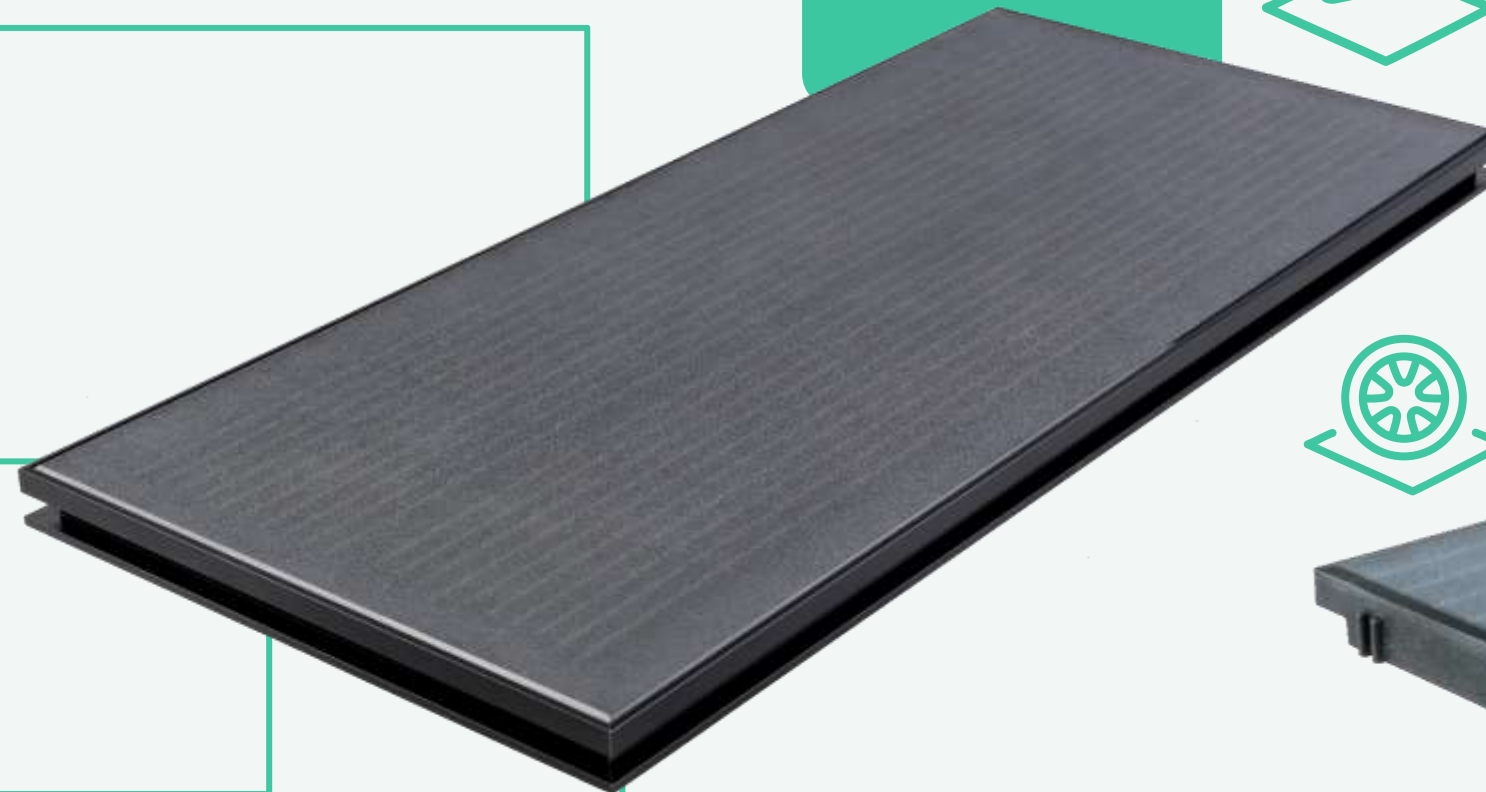
EASY INTEGRATION

Compatible with WPC, wood and stone decking systems

LOAD CAPACITY

Up to 300 kgs

SOLAR DECK



SOLAR PAVER



RECYCLED PLASTIC FRAME

Recycled plastic waste makes up the frame. Durable structure, similar lifespan as concrete

COMPATIBILITY

Compatible with stone and concrete pavers

LOAD CAPACITY

Up to 2 tons

TEMPERED GLASS

Tempered, scratch resistant, anti-slip glasses protects the cells

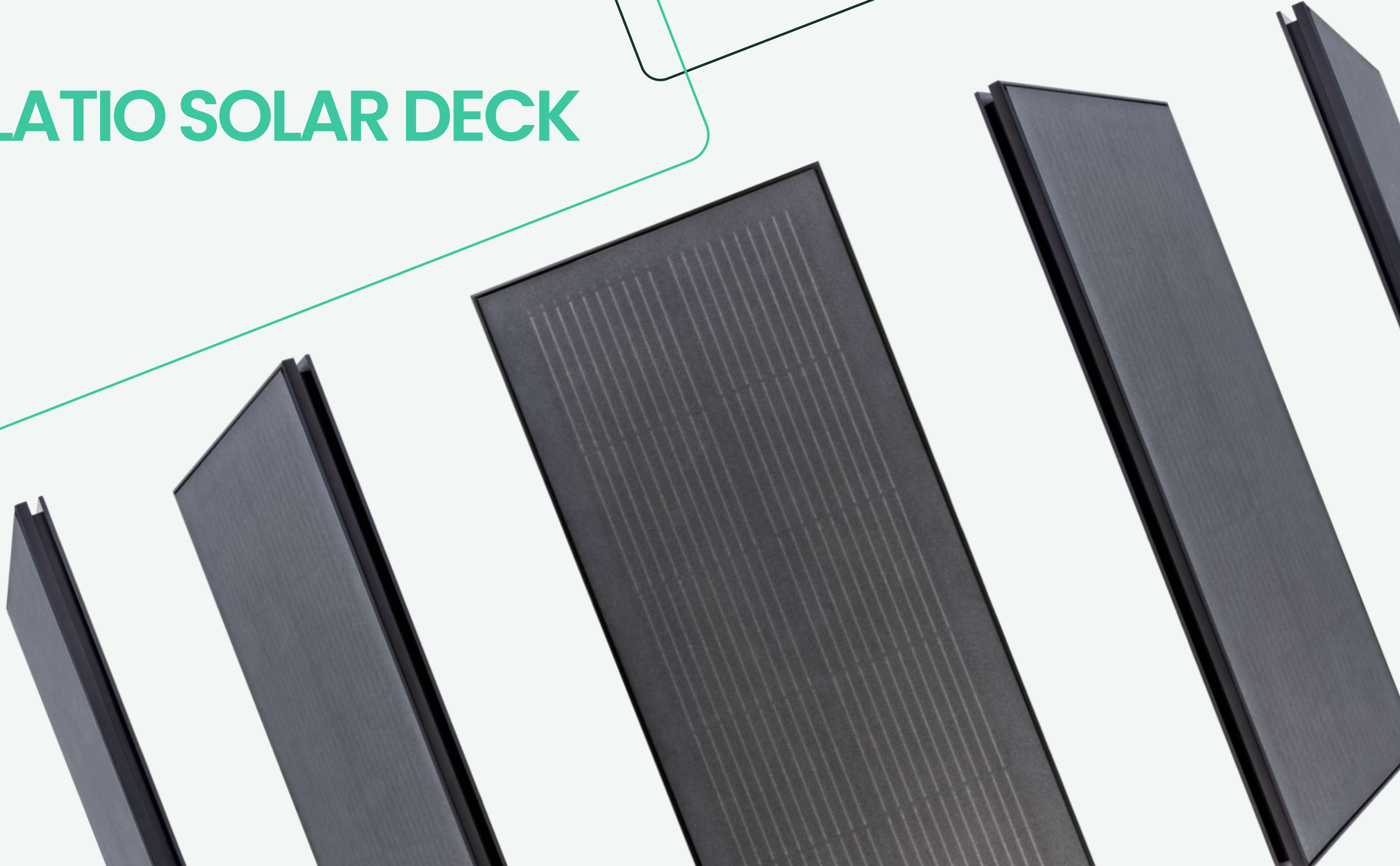
BUILT IN SOLAR CELLS

High-performance photovoltaic cells collect the energy of solar irradiance on the level of pavement

MODULAR SYSTEM

Modular units interlock together creating a solar surface.

PLATIO SOLAR DECK



FORGET CLASSIC DECKING...

STONE DECKING



WOOD DECKING



WPC DECKING



PLATIO Solar Decks go beyond traditional wood, WPC, or stone decking. They're more durable, require minimal maintenance, and deliver a **ROI as low as 5 years**. Plus, they generate clean energy while seamlessly integrating with existing decking systems for a sleek, modern upgrade.

SOLAR DECK APPLICATION AREAS

PONTOONS / MARINAS



ROOFTOPS / EVENT SPACES



BALCONIES / TERRACES



Solar Deck can be installed in locations where conventional solar technologies are not feasible. Ideal for a wide range of applications, from offices and residential buildings to marinas, **PLATIO Solar Deck** represents a new generation of modern, space-saving, and sustainable energy solution.

Recommended usage areas

- Decks
- Rooftops
- Balconies/Terraces
- Event spaces
- Outdoor venues
- Pontoons / Marinas



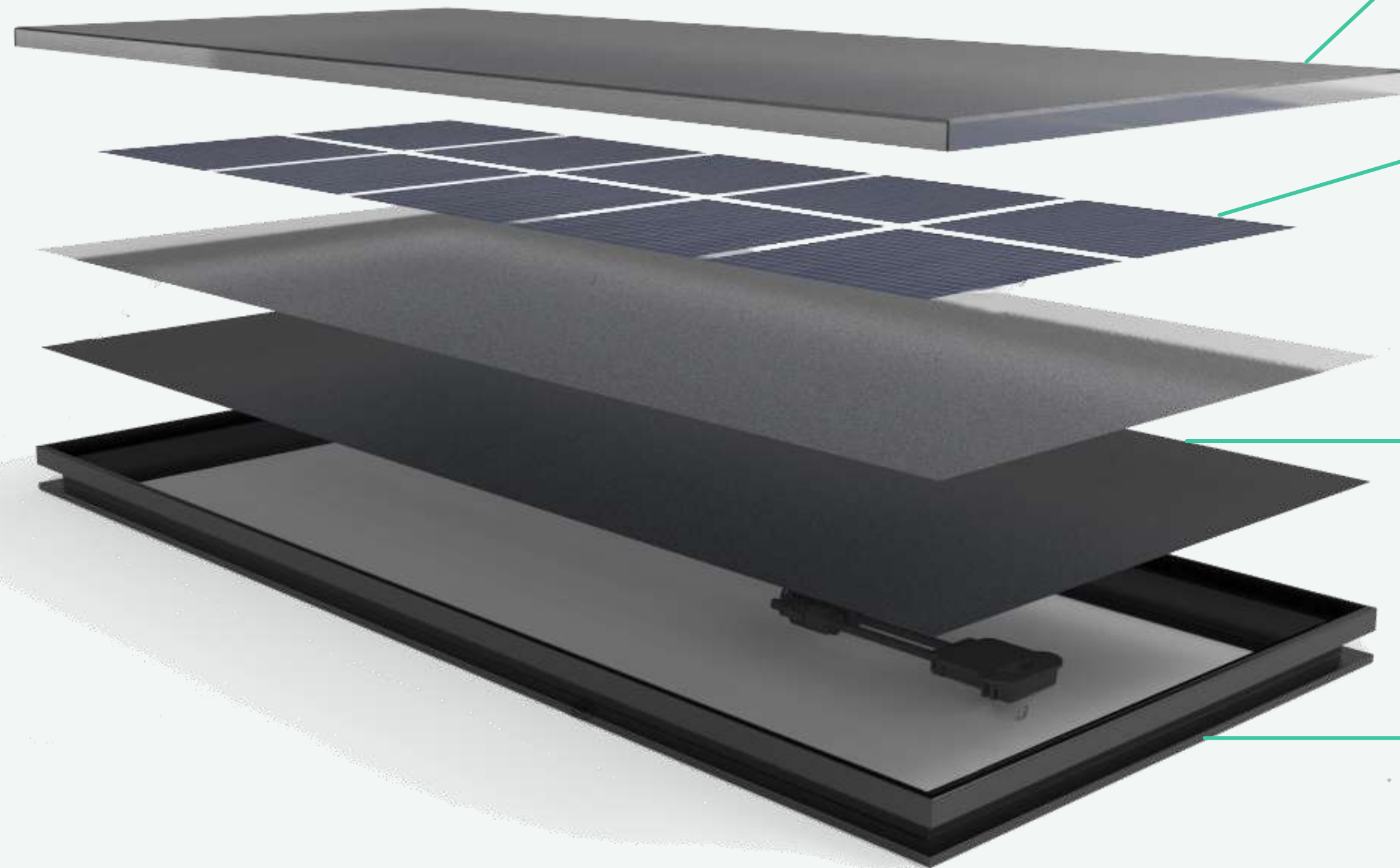
SOLAR DECK TECHNICAL SPECS

Dimensions (mm)	447x447x40	447x1000x40
Material requirements (pcs/m²)	4,878	2,193
Weight (kg/pc)	5,5	11,5
Anti-skid category	R11 according to DIN 51 130	
Maximum allowed load (kg/pc)	300	
Product nominal power* (Wp/m²):	117,1	133
Return on investment	As low as 5 years*	

*Combined calculated return which is based on the average 10-year lifespan of timber or WPC decking's and subject to local electricity prices.



SOLAR DECK PRODUCT DETAILS



TEMPERED GLASS

- 8 mm tempered glass
- Low-iron, extra clear
- High transparency rate
- Blasted surface
- Anti-slip according to DIN 51130 R11

SOLAR CELLS

- 182 x 182 mm
- Monocrystalline
- Anti-reflection coated
- 10 busbars
- Anisotropically edged

BACKSHEET

- Fluoroethylene Vinyl Ether (FEVE)
+ PET multilayer
- 0.3 mm thick

FRAME

- Black anodized aluminum
- Can be fixed with standard WPC clips
- Patent pending technology



PLATIO SOLAR DECK: A UNIQUE BUILDING MATERIAL WITH QUICK ROI



THE ONLY DECK WITH RETURN ON INVESTMENT



DOUBLE THE LIFESPAN OF A REGULAR DECK

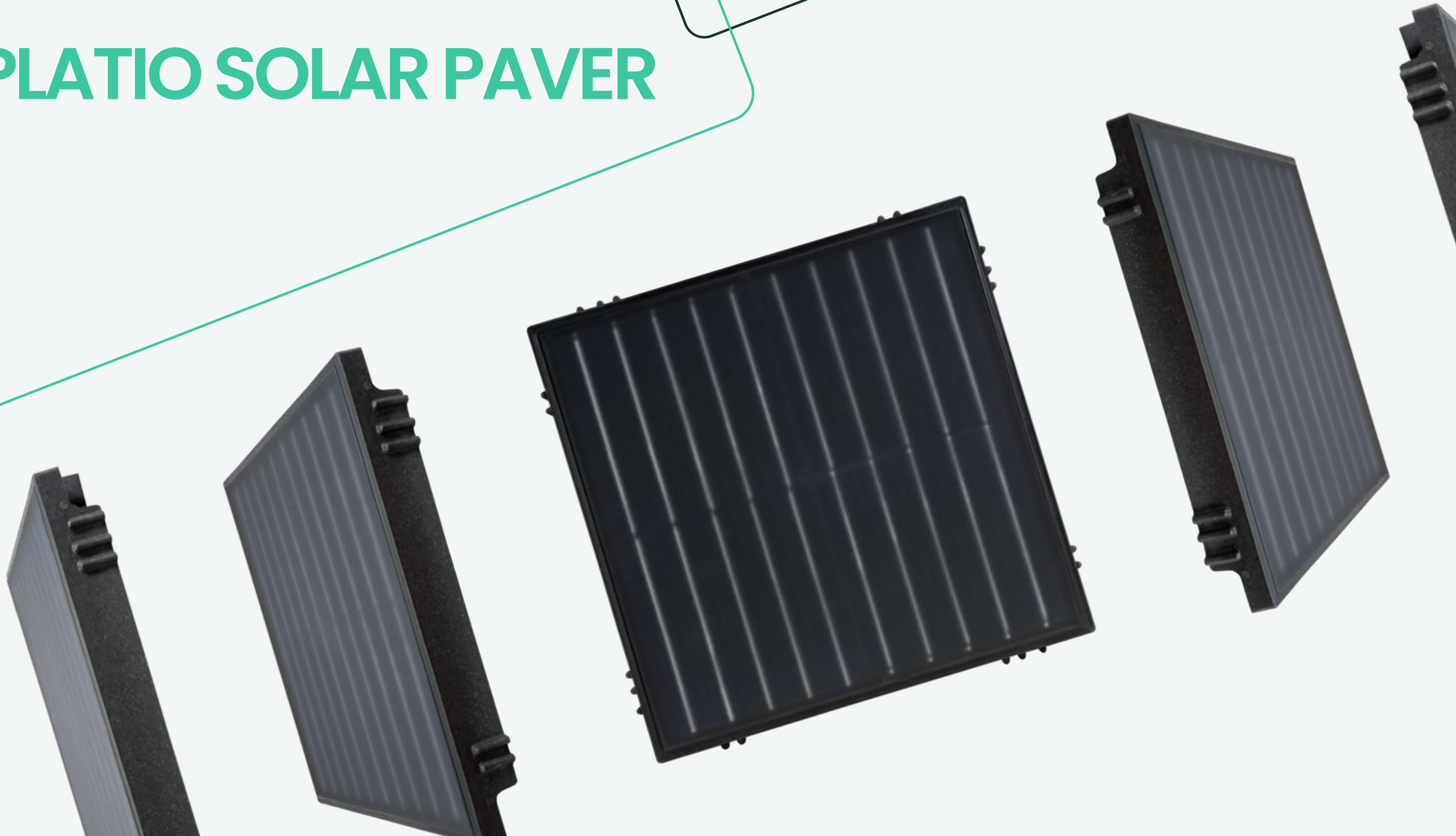


2-IN-1 SOLAR-IN-DECK: THE ONLY DECK WITH INTEGRATED SOLAR POWER



The PLATIO Solar Deck offers a quick return on investment, achievable in as little as 5 years, while delivering a durable, UV-resistant energy solution designed for long-lasting performance.

PLATIO SOLAR PAVER



SOLAR PAVER APPLICATION AREAS

PUBLIC SPACES



WALKWAYS



BRIDGES



Solar Paver can be installed in locations where conventional solar technologies are not feasible. From driveways to public spaces, **PLATIO Solar Paver** represents a new generation of modern, space-saving, and sustainable energy solution.

Recommended usage areas

- Driveways
- Walkways
- Front / Backyards
- Public spaces
- Sidewalks
- Outdoor venues
- Bridges / Overpasses

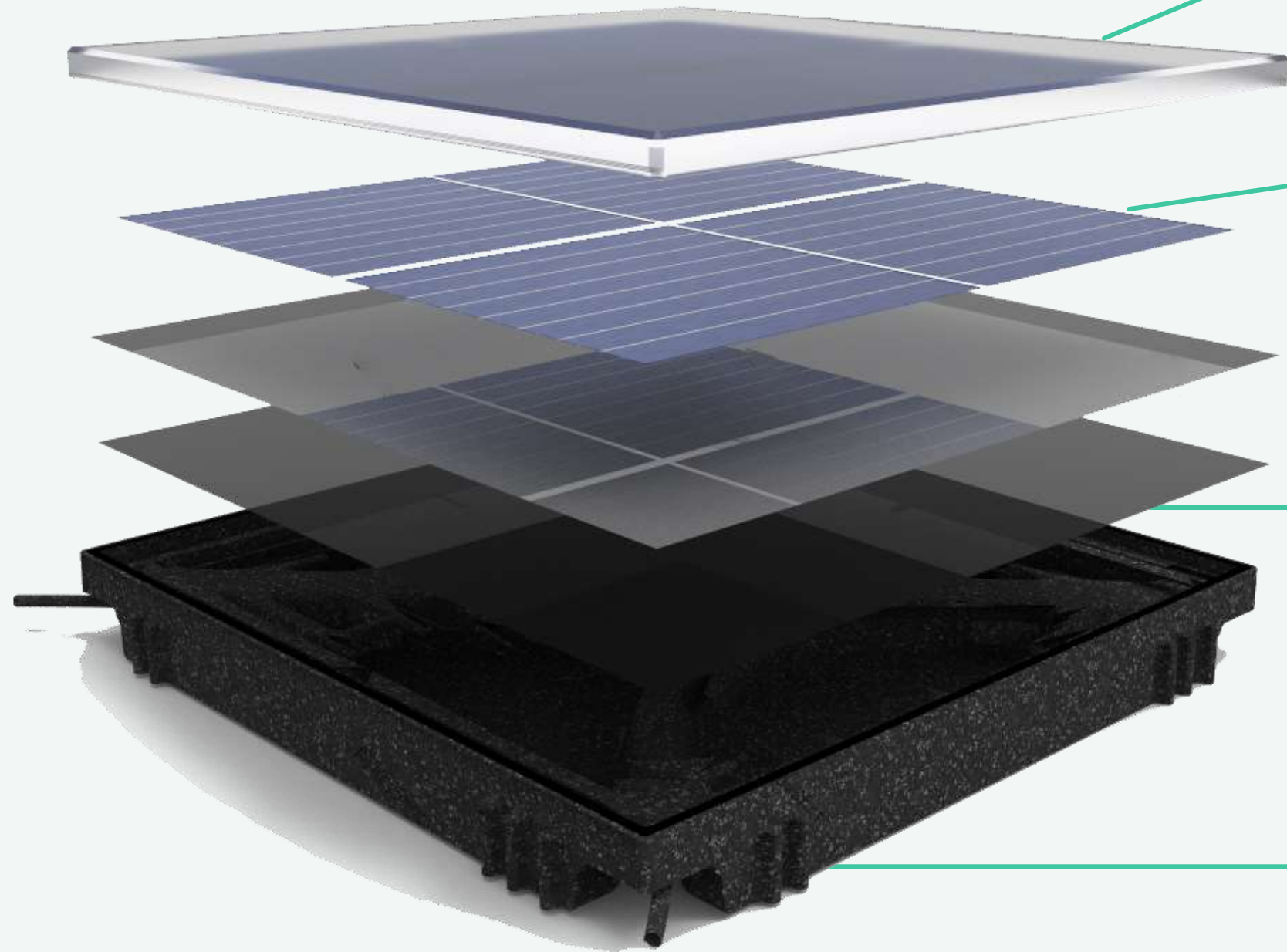


SOLAR PAVER TECHNICAL SPECS

Dimensions (mm)	353x353x41
Material requirements (pcs/m²)	7,752
Weight (kg/pc)	6,5
Anti-skid category	R11 according to DIN 51 130
Maximum allowed load (kg/pc)	2000
Product nominal power (Wp/m²)	140



SOLAR PAVER PRODUCT DETAILS



TEMPERED GLASS

- 10 mm tempered glass
- Low-iron, extra clear
- High transparency rate
- Blasted surface
- Anti-slip according to DIN 51130 R11

SOLAR CELLS

- 156.75 x 156.75 mm
- Mono PERC technology
- Anti-reflection coated
- Front: 5 x 0.7 mm busbars
- Back: 5 x 1.8 mm busbars

BACKSHEET

- Fluoroethylene Vinyl Ether (FEVE)
+ PET multilayer
- 0.3 mm thick

FRAME

- UV resistant PE + quartz aggregate
- Spacing nibs on sides
- 100% recycled plastic

INNOVATIVE SOLAR SOLUTIONS FOR SUSTAINABLE ARCHITECTURE

Challenges:

Integrating solar energy into architectural designs.

Targeting sustainability and urban development

Increasing the use of recycled materials in construction.

Balancing sustainability, aesthetics, and functionality while achieving carbon neutrality.



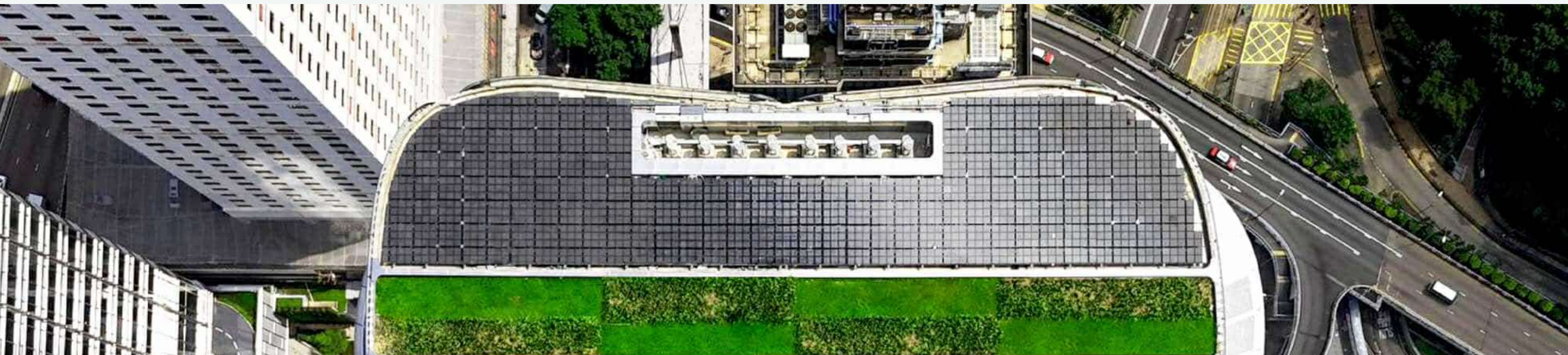
Solutions via PLATIO Solar:

Solar Power-Generating Paving: Easily integrated into architectural projects.

Space-Saving Design: Ideal for urban environments.

CO₂-Neutral Construction: Made from recycled materials to promote sustainability.

Aesthetic and Functional Innovation: Durable, low-maintenance pavers transform spaces into eco-friendly power hubs.



STANDARDS AND CERTIFICATIONS



- **CE** Declaration of Performance: A declaration outlining the performance characteristics of a product, ensuring it meets the essential requirements for its intended use within the EU.
- **DIN 51097** Slip Resistance: A report on the slip resistance of a surface under wet conditions according to the DIN 51097 standard
- **DIN 51130** Slip Resistance: An evaluation of the slip resistance of a surface according to the DIN 51130 standard
- **EN 11925** Flammability Test Report: A flammability test report conducted according to the EN 11925 standard, assessing a product's reaction to fire.
- **EN 13036-4** Slip-Skid Resistance: A slip and skid resistance test report following the EN 13036-4 standard, determining the frictional properties of a surface.
- **EN 10545-13** Chemical Resistance: A chemical resistance test report conducted as per the EN 10545-13 standard, determining a surface's resistance to various chemicals.
- **EN 14617-9** Impact Resistance: An impact resistance test report according to the EN 14617-9 standard, assessing the durability of a surface against impacts.
- **IEC 60529** IP Test (Waterproofing): A waterproofing test report based on the IEC 60529 standard, determining the ingress protection (IP) rating of a product against water and dust.



STANDARDS AND CERTIFICATIONS



- **IEC 62788-2** Material Characterization: A standard focusing on the material properties and durability assessment of photovoltaic (PV) modules.

IEC 62788-1 Performance Evaluation: A guideline for evaluating the environmental and mechanical performance of materials used in PV applications.

UL 3730 Junction Box Evaluation: A certification standard for the safety and performance evaluation of junction boxes used in photovoltaic (PV) systems.

UL 6703 Photovoltaic Connector Safety: A safety standard addressing connectors for use in photovoltaic (PV) systems to ensure proper mechanical and electrical connection.

UL 4703 PV Wire Testing: A safety standard for photovoltaic (PV) wires, focusing on insulation integrity and resistance to environmental conditions.

UL 969 Label and Marking Durability: A standard assessing the durability of labels and markings used on products, including resistance to wear, heat, and exposure.



PLATIO Solar: Key Projects and Signature Installations

PLATIO SOLAR REFERENCES

homes

smart cities

green companies

e-mobility

public places

event spaces

© PLATIO. ALL RIGHTS RESERVED.



PLATIO



HOMES

35 sqm wide solar pavement was installed on the the driveway of the real estate with marvelous panorama near Lake Balaton. The owner chose PLATIO's on-grid solution in order to utilize the driveway and also contribute to the energy supply of the house.



BALATONALMÁDI, HUNGARY



35.14 sqm



6.3 kWp



PLATIO



GREEN COMPANIES

3450 pcs of PLATIO Solar Pavers have been installed at the Lee Garden tower.



Hong Kong, China



450 sqm



72 kWp



PLATIO



GREEN COMPANIES

Phoenix Contact chose PLATIO solar paving as a **unique building-integrated solution** and the solar pathway contributes to renewable energy generation in the park and illustrates the variety of sustainable solutions.



GERMANY
Phoenix Contact GmbH & Co.KG



25,78 sqm



4,2 kWp





GREEN COMPANIES

In 2021, 21pcs of PLATIO Solar Pavers were installed in the garden of Graphisoft Park. These innovative solar surfaces harness solar energy to generate electricity, which powers a robotic lawnmower. This integration of renewable energy solutions not only enhances the sustainability of the park but also demonstrates the practical applications of PLATIO Solar Pavers in real-world settings.



BUDAPEST, HUNGARY
Graphisoft Park



2,7 sqm



0,44 kWp





GREEN COMPANIES

PLATIO's photovoltaic pavement was installed at the Porto Rotondo Yacht Club in Sardinia, as part of the Innovative Sailing World Cup. This project, realized in partnership with Ecopro Energia, demonstrates how pedestrian surfaces can be transformed into clean energy-generating hubs. By utilizing PLATIO's solar technology, the installation supports sustainable energy production without compromising public space, marking a significant contribution to the ecological transition.



SARDINIA, ITALY
Porto Rotondo Yacht Club



xx sqm



xx kWp





SMART CITIES

In cooperation with European Union, 'Making Cities' project, we built a solar pathway in the city of Gröningen as the first lighthouse net-zero pilot. We laid 325 sqm of PLATIO solar pavement on the bank of the river, providing electricity to the local community and municipality buildings.



GRÖNINGEN, NETHERLANDS
Municipality of Gröningen



325 sqm



52 kWp





SMART CITIES

In the town of Cham, we proudly created Switzerland's first solar-powered bike path, featuring **PLATIO Solar Pavers**. Installed along an urban cycle and pedestrian route, this innovative off-grid solar system powers an electric bike charging station located nearby. Any unused solar energy is efficiently redirected to supply the adjacent school building, contributing to the community's energy needs.



CHAM, SWITZERLAND
Municipality of Cham, Faboro Deutschland GmbH



10 sqm



1,67 kWp





SMART CITIES

In 2019, the first pilot project for constructing bicycle roads using PLATIO's off-grid solution was launched near the town of Gárdony in Western Hungary. The goal was to reconstruct a busy asphalt bicycle road with photovoltaic solar tiles, providing energy to power public lighting.



GÁRDONY, HUNGARY
Magyar Közút Nonprofit



Zrt.
120 sqm



18,6 kWp





SMART CITIES

With the help of PLATIO pavers, the first carbon-neutral park opened in Malta. The Rinella park in Kalkara is unique because the energy supply is fully covered by renewable energy sources. The 25 sqm long PLATIO solar pavement generates electricity for the lighting and irrigation system of the park.



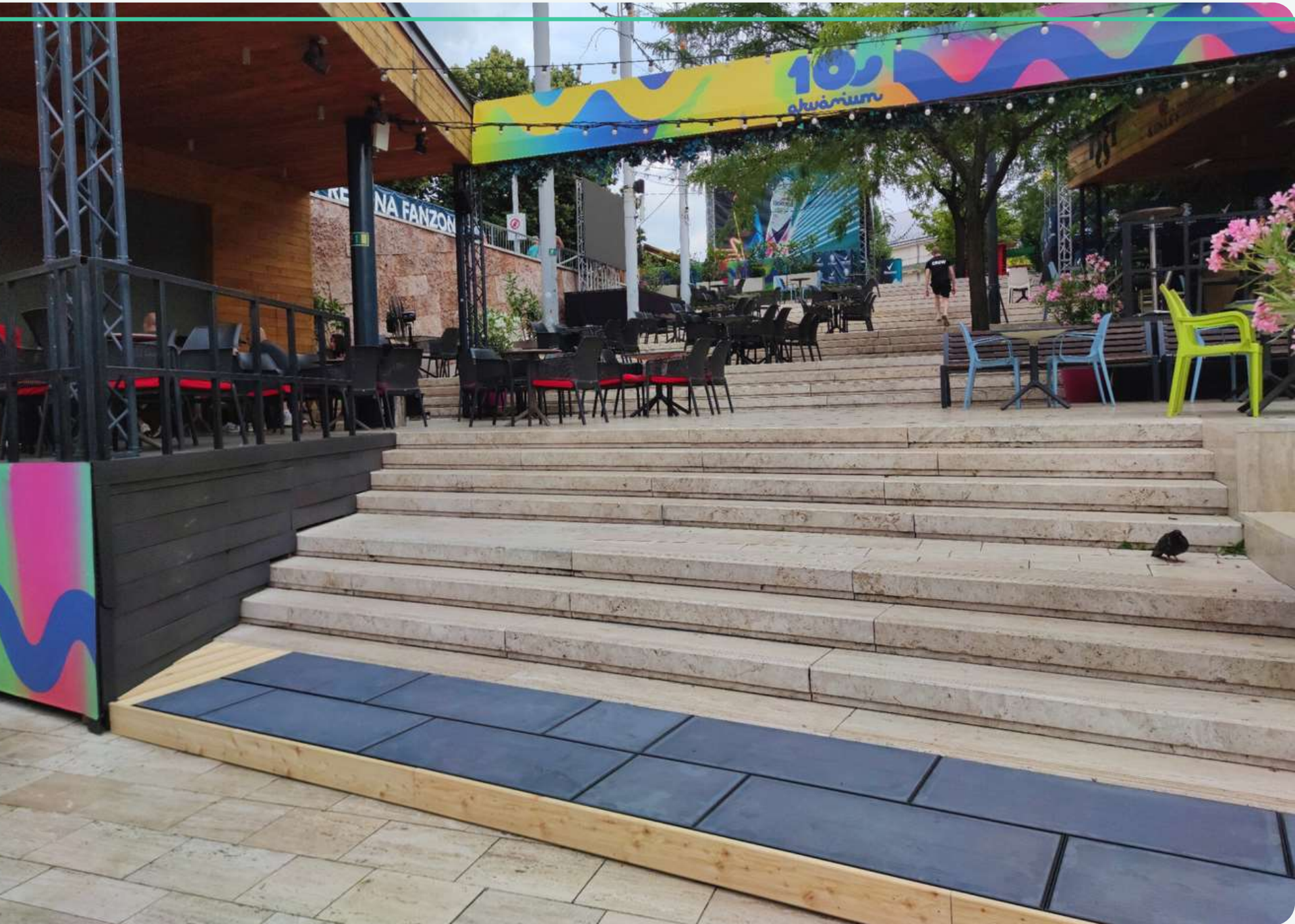
KALKARA, MALTA
Municipality of Kalkara



25 sqm



4,1 kWp



EVENT SPACE

Budapest located popular outdoor club decided to go green and apply the new PLATIO Solar Deck system. Such installations raise attention for energy saving solutions among the young generation - enabling charging their phones and other devices.



BUDAPEST, HUNGARY
Akvárium Gasztro Kft.



4,4 sqm



0,6 kWp





PUBLIC SPACE

A significant PLATIO installation has been realized in the renewed KRESZ Park of Városliget, which substantially **contributes to the park's energy production**. This innovative solution harmoniously fits into the park's aesthetic and functional design while producing clean, renewable energy on-site in the spirit of sustainability.



BUDAPEST, HUNGARY
Városliget Zrt.



17,5 sqm



2,8 kWp





E-MOBILITY

In collaboration with Rollin and Kuube, we have developed a unique micromobility solution: a micromobility station powered by green energy and equipped with smart features. The **PLATIO pavements charge the electric scooters** waiting at Rollin's charging stations with solar energy. The Kuube smart bench complements this with smart functions (Wi-Fi, phone charging, music) and provides a social experience for users.



BUDAPEST, HUNGARY
Kuube, Rollin



3,52 sqm



0,46 kWp



E-MOBILITY

At the entrance of Westfield La Maquinista, Barcelona's largest shopping center, you'll find the first PLATIO-powered scooter charger. Our solar pavers power Yupcity's charging stations, allowing shoppers to fully recharge their scooters while they shop. This micromobility project marks an exciting step toward making public transport more sustainable, showcasing how renewable energy can support eco-friendly urban mobility.



BARCELONA, SPAIN
Yupcharge



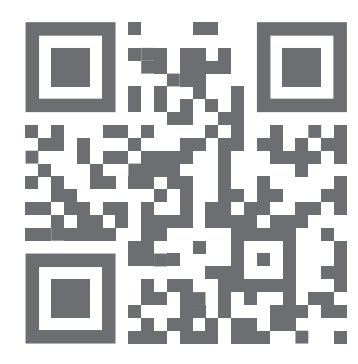
4,5 sqm



1 kWp



WALK WITH US, TALK WITH US



To receive more detailed information or specific answers about PLATIO, you can contact us by email (info@platiosolar.com) or by phone (+36703914708).

Confidentiality & Disclaimer

This presentation and its contents are wholly confidential and may not be further distributed or passed on to any other person or published or reproduced, in whole or in part, by any medium or in any form for any purpose. Statements in this presentation may contain forward-looking comments connected to risks and uncertainties that may cause actual results to vary from those in such statements. Forward projections reflect management's best estimates based on information available at the time of issue.

